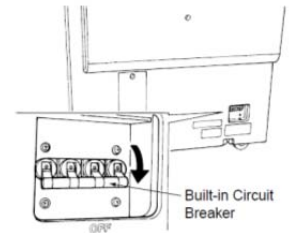


Please follow the steps below for each machine to properly prepare the Photo Lab equipment for temporary shut-down.

For Wet-Labs Printers (Fuji LP5700R, LP5700, and LP5900 printers):

1. Click and follow the normal [Post-operation Check].
2. Note the automatic shut-down operations take several minutes to fully complete. It is very important to allow the printer to fully finish this process. When complete the printer will shut down completely.
3. When the printer has turned itself off, then turn the built-in circuit breaker off; located on the lower right side of printer. See illustration to the right.
4. Do additional cleaning to the crossovers & dryer entrance rack by removing and cleaning them in the sink. Use spray bottle with warm water to rinse the tops of the racks to thoroughly wash down any chemical residue in the working tanks.
5. **Important:** Re-install crossovers & dryer entrance rack back into the machine.
6. Clean and replace all circulation filters.
7. Close the dryer section and all other doors.
8. Do normal Windows shut-down on the LPC and PIC computers.

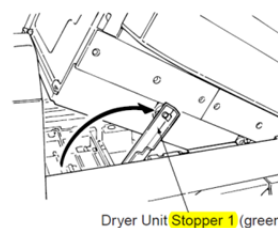


Recommendation for short term storage: Weekly steps to minimize the oxidation and crystallization of the chemicals:

1. Restart the system by first turning on the printer's breaker, and then manually start machine by turning on the stand-by switch. Note the machine may alarm of the working tank levels being low. If this occurs you need to top off by adding warm water into each of the working tanks.
2. The machine will need to warm up for approx. 30 – 60 minutes. Also note that "Evaporation Compensation" will likely be displayed for a much longer time period. This is normal and will clear automatically when finished.
3. Start up the LPC. Once fully started Start up the PIC computer.
4. Print at least (300) 6x4 prints and (50) 12x18 prints to allow the circulation and replenishment systems to be exercised and refreshed.
5. Follow the shutdown steps again as described above.
6. Following these steps should prolong the chemical in the working tank for approximately one month.

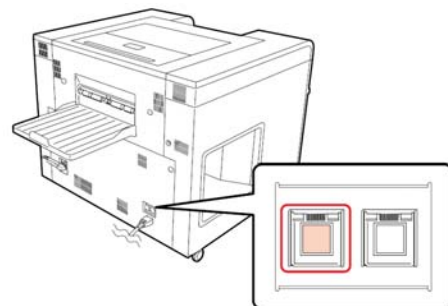
Recommendation for short term storage: Recommend for shutdown over 30 days:

1. Click and follow the normal [Post-operation Check].
2. Note the automatic shut-down operations take several minutes to fully complete. It is very important to allow the printer to fully finish this process. When complete the printer will shut down completely.
3. When the printer has turned itself off, then turn the built-in circuit breaker off; located on the lower right side of printer. See illustration above.
4. Do normal Windows shut-down on the LPC and PIC computers
5. Do additional cleaning to the crossovers & dryer entrance rack by removing and cleaning them in the sink. Use spray bottle with warm water to rinse the tops of the racks to thoroughly wash down any chemical residue in the working tanks.
6. Drain Working tanks and properly dispose of the chemicals.
7. Drain the Replenisher tanks and properly dispose of the chemicals.
8. Fill and drain the Working and Replenisher tanks with room temperature water 2 times.
9. Important: Re-install crossovers & dryer entrance rack back into the machine.
10. Dispose of all circulation filters.
11. Leave the dryer section open at Stopper Postion 1.



For Dry Labs (Fuji DL600 or DL650 printers and DX100):

1. Click and follow the normal [Post-operation Check].
2. Note the automatic shut-down operations take about 1 – 2 minutes to fully complete. Allow the process to fully finish.
3. Turn off the Power Switch on the printer located above the main power connection. See illustration to the right.
4. Do normal Windows shut-down on the LPC and PIC computers.
5. **Important:** Do not remove any of the ink cartridges, they must remain in the machine and fully inserted to properly seal the ink systems.
6. Clean all surfaces of the lab equipment.
7. Seal all remaining paper by placing in the Fuji Paper cases and keep in a safe area.
8. Following these steps should keep the print head and inks in working order for at approximately 30 days. If the down time is known to be more than 30 days, it would be best to drain and flush the printers. As an alternative, one might be able to prolong the dormant time by periodically making a few prints or test prints and then do a normal shutdown. Performing a weekly nozzle check, weekly Diagnostic Cleaning and if indicated a Forced Cleaning would be ideal if that is possible.



Recommendation:

1. If the printer is expected to be **out of service for more than 30 days**, it would be advisable to flush the system of ink.
 - a. For the DX100, see attachment **"DX100 Drain and Clean.pdf"**.
 - i. Cleaning cartridges for the DX100 can be used up to 10 times (6 cartridges needed)
 - b. For the DL650, see the service manual section **5.5.10 Ink Draining/Head Washing**.
 - i. Cleaning cartridges for the DL600/650 can be used up to 2 times (6 cartridges needed)

Product Names for DL650	Order From	Product Code	Price	Number of Machines Per Cartridge Set	
				1	2
(6x) Drain Cartridges (Unlimited Use)	Fuji Minilab Parts*	Part # 1614982	\$220.54	\$1,323.24	\$661.62
(6x) Cleaning Cartridges (Up to 2 Uses)	Fuji Minilab Parts*	Part # 1614981	\$245.03	\$1,470.18	\$735.09
(1x) Waste Ink Tank (One per Machine)	Customer Service**	SAP# 16091154	\$90.00	\$90.00	\$90.00
Flushing Cost Per Unit				\$2,883.42	\$1,486.71

Product Names for DX100	Order From	Product Code	Price	Number of Machines Per Cartridge Set									
				1	2	3	4	5	6	7	8	9	10
(6x) Drain Cartridges (Unlimited Use)	Fuji Minilab Parts*	Part # 1614982	\$13.71	\$82.26	\$41.13	\$27.42	\$20.57	\$16.45	\$13.71	\$11.75	\$10.28	\$9.14	\$8.23
(6x) Cleaning Cartridges (Up to 10 Uses)	Fuji Minilab Parts*	Part # 1614981	\$13.71	\$82.26	\$41.13	\$27.42	\$20.57	\$16.45	\$13.71	\$11.75	\$10.28	\$9.14	\$8.23
(1x) Maintenance Cartridge (1 per Machine)	Customer Service**	SAP# 16394996	\$48.13	\$48.13	\$48.13	\$48.13	\$48.13	\$48.13	\$48.13	\$48.13	\$48.13	\$48.13	\$48.13
Flushing Cost Per Unit				\$212.65	\$130.39	\$102.97	\$89.26	\$81.03	\$75.55	\$71.63	\$68.70	\$66.41	\$64.58

Current prices for drain and flush consumable items

*As of 3/20/2020-prices subject to change

*Fuji Parts 1-800-669-3854 ext 2

**Fuji Customer Service 1-888-676-3719

Ink Discharge and Flushing Instructional

Preface

These instructions are intended to guide you through the process of discharging and flushing the ink from your DX100. Please read this page and refer back to it for troubleshooting.

Supplies required to perform ink discharge and flushing are as follows:

- 6 - Drain Cartridges / Part # 1614982
- 6 - Cleaning Cartridges / Part # 1614981
- 1 - Maintenance Cartridge /SAP# 16394996

The Draining Cartridge can be used over and over again. It is important to keep them stored in a safe place as to not damage the cartridge or the chip located on the side of the cartridge.

The Cleaning Cartridge can be used ten (10) times. We recommend marking on the cartridge the amount of times it has been used. It is also important to keep them stored in a safe place as to not damage the cartridge or the chip located on the side of the cartridge.

The Maintenance Cartridge can typically be used twice for either an initial ink charge or discharge and flushing. However, the cartridge can be used for printing production until the printer deems it as full.

The PC being used for this process should only have one DX100 connected at a time. Having more than one printer connected will cause a communication conflict with in the application. At this time MAC is not support for performing this process on the DX100.

When performing the procedure you may encounter circumstances that require further steps as described below:

Q. What if an Ink light turns amber and the printer is beeping?

A. Open the Ink cartridge cover and remove the cartridge, then re-insert it, close the cover and allow the printer to re-initialize.

Q. What if I receive a communication error?

A. Power off the printer and close the Application, Then restart the printer. When the printer has a steady blue light, open the Application and try again.

Q. Why are all the ink lights, Exclamation, Maintenance, and Paper Light on and the printer is beeping.

A. Typically this is caused by having the incorrect cartridges in the printer. i.e. drain cartridges are in when the printer requires cleaning.

Q. What if I am having trouble with this process? Can I call the HelpDesk?

A. Yes, Please call 1.800.669.3854. Please have this document when discussing with the agent to better help with your issue.

Ink Discharge and Flushing Instructions For DX100

Installing the Discharge and Flushing Utility

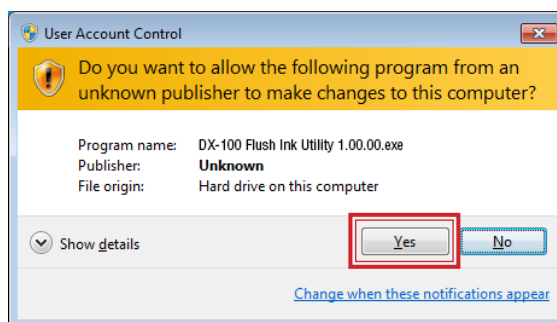
- 1 Insert the media with the DX100 Flush utility into your PC.

Browse to your media and double click the Apps icon.

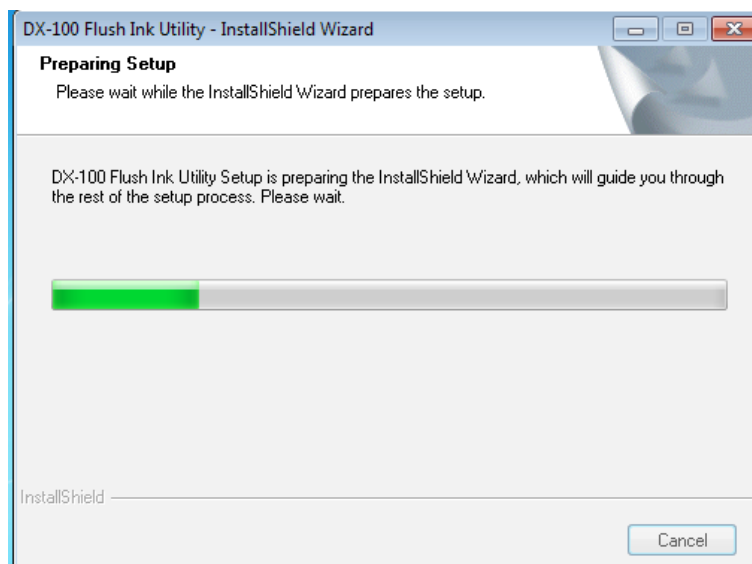


- 2 The following message appears.

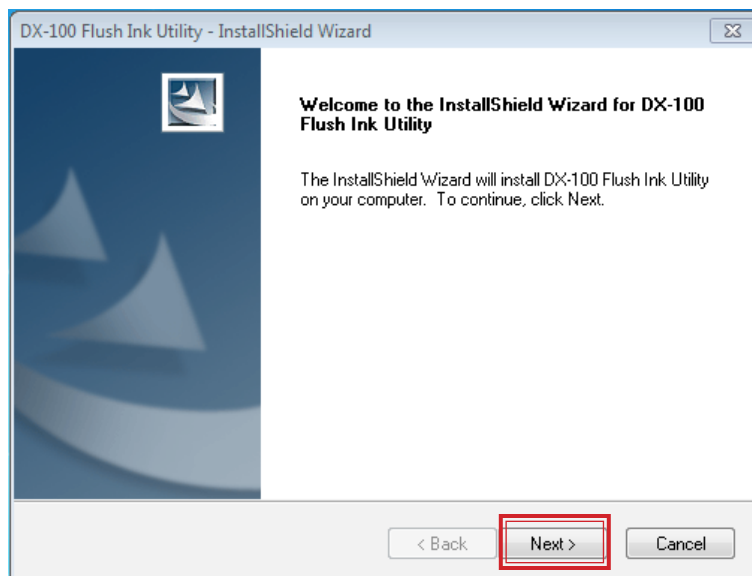
Click Yes.



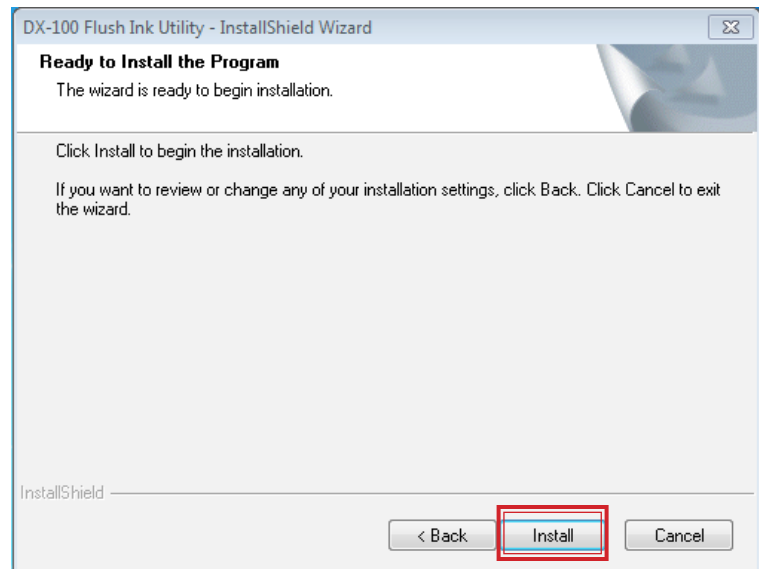
- 3 The installation will initiate.



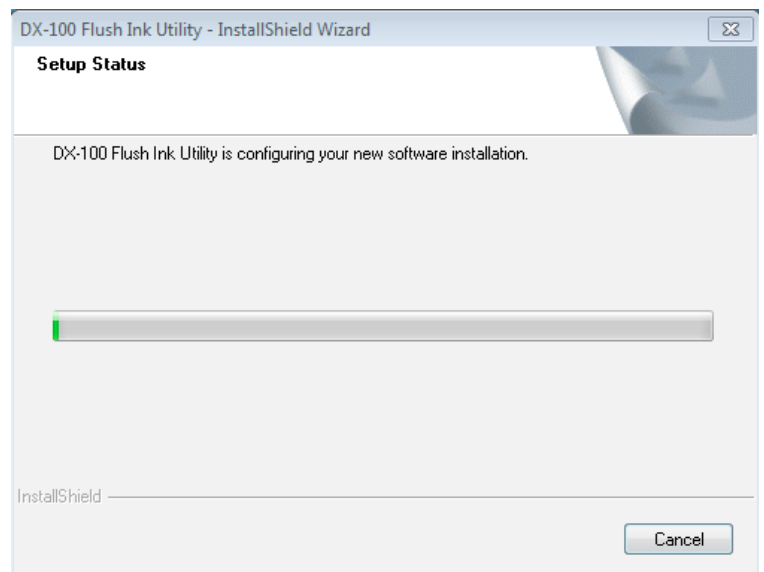
- 4 Click Next to begin the installation.



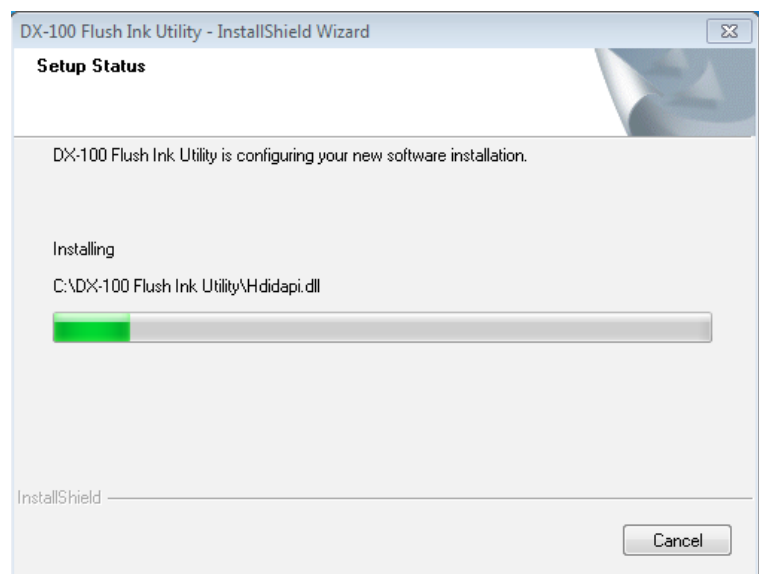
5 Click Install.



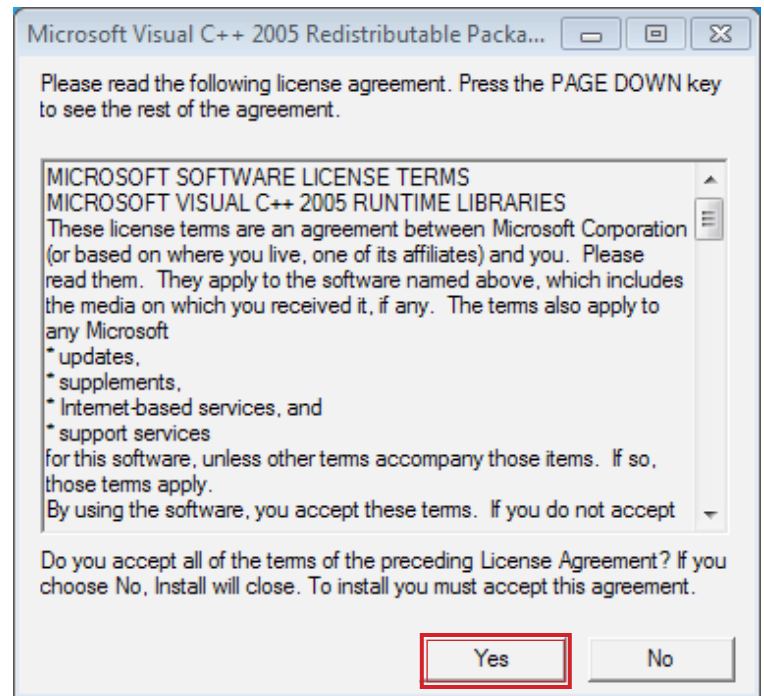
6 The necessary files will be extracted. This may take up to a minute.



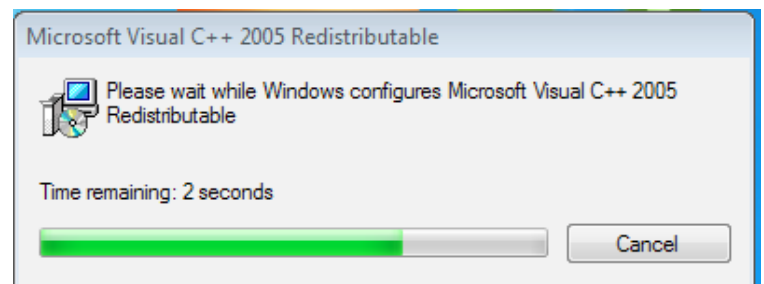
7 The application will begin to install and progress bar will continue.



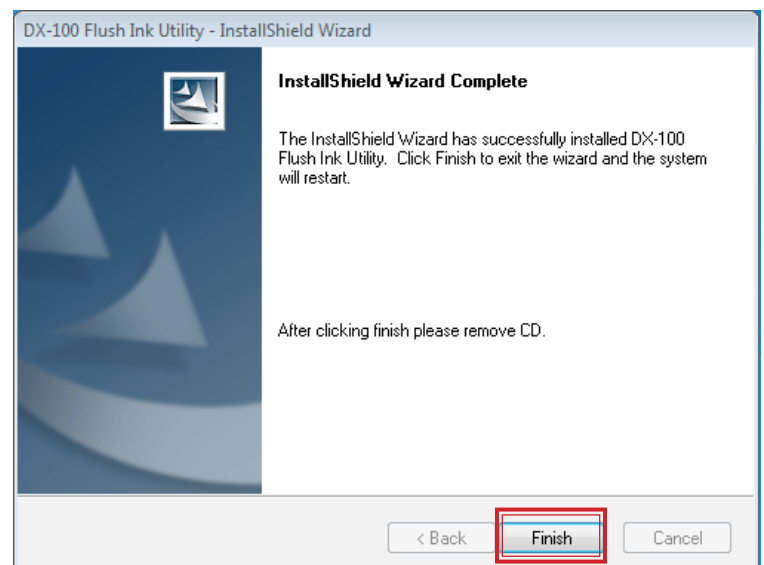
- 8 Select Yes to install the redistributable files. This will ensure proper functionality of the application.



- 9 The following messages will appear showing the install progress.



- 10 Click Finish and remove your media. The installation is now complete.

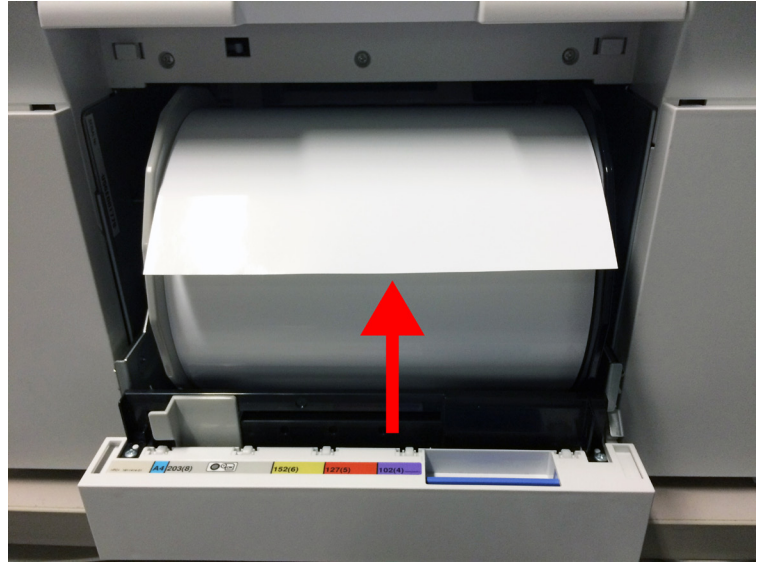


Note: The Utility Icon will be placed on your desktop.



Performing Discharge and Flushing

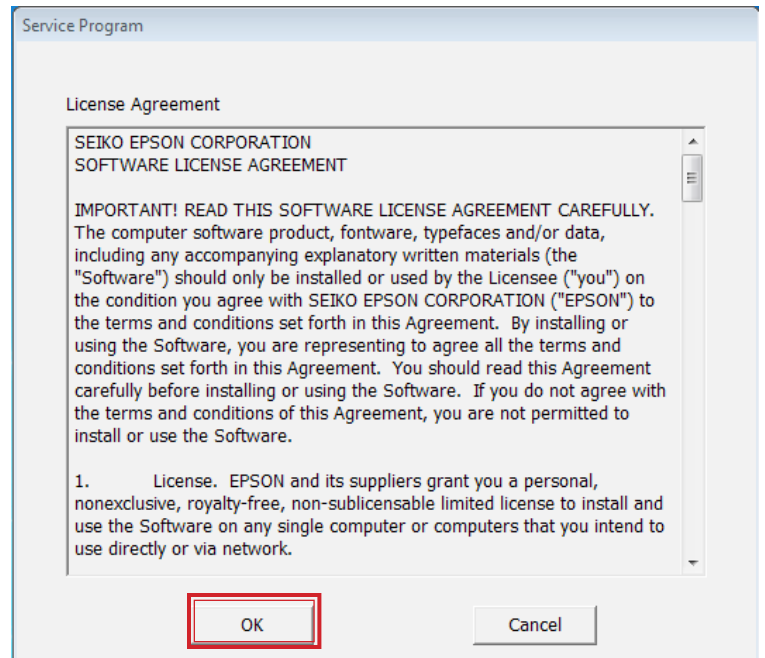
- 1 Unload the paper from the Roll Unit.



- 2 Double click the DX-100 Flush Ink Utility

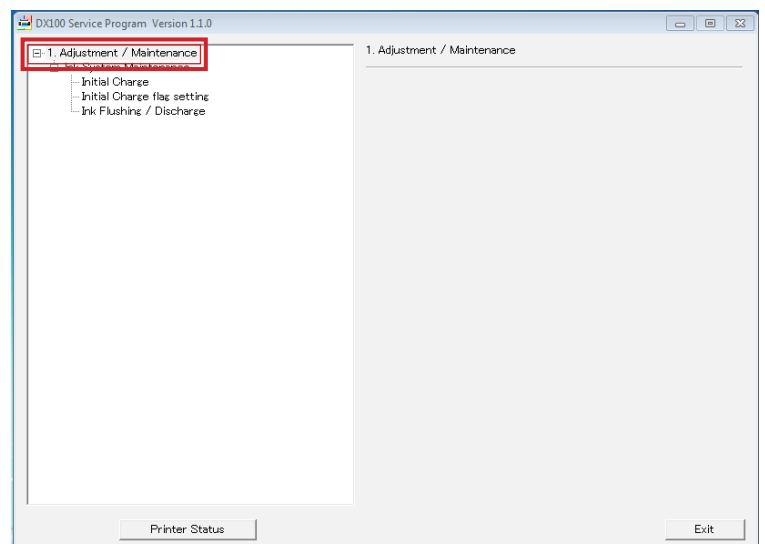


- 3 Click OK to the license agreement to continue.

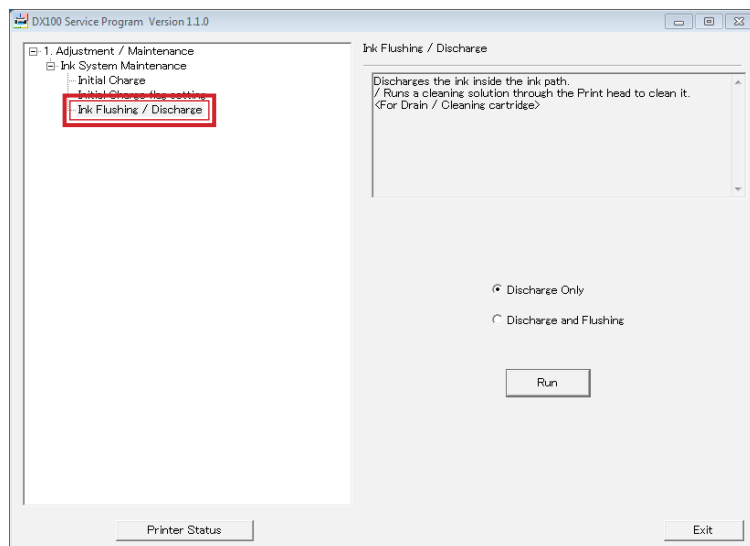


- 4 Click the + to expand the Adjustment / Maintenance Menu.

The expand the Ink System Maintenance Menu

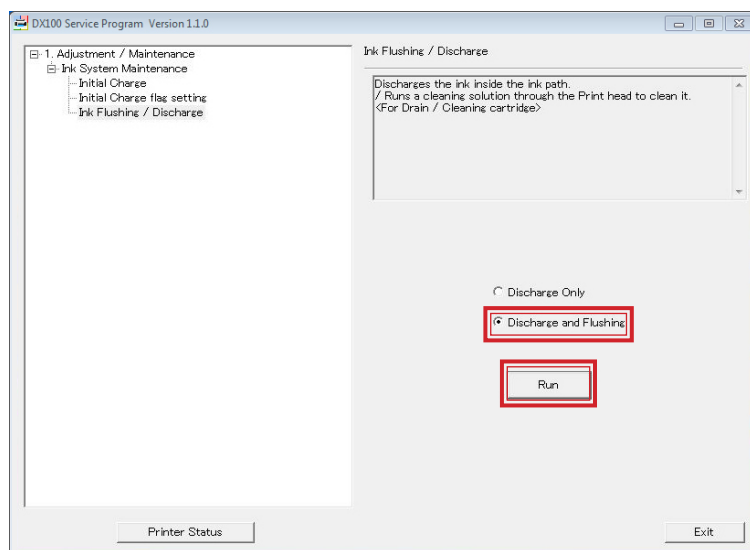


5 Select Ink Flushing / Discharge



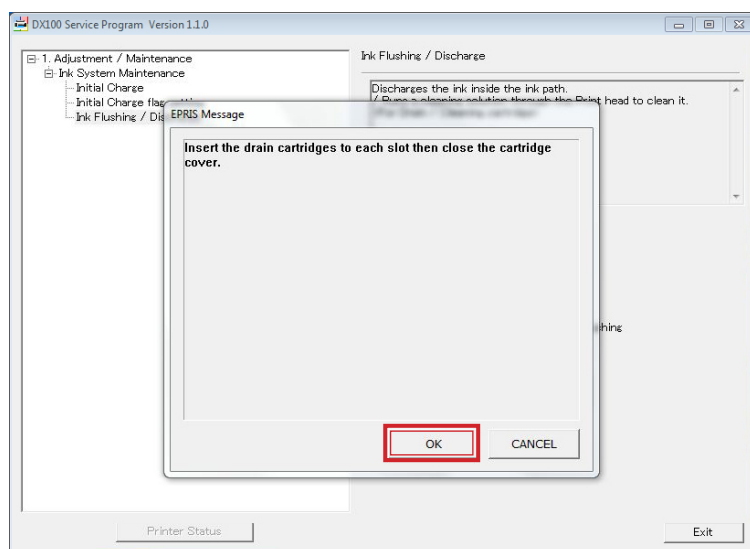
6 Select the radio button for Discharge and Flushing.

Then click RUN.

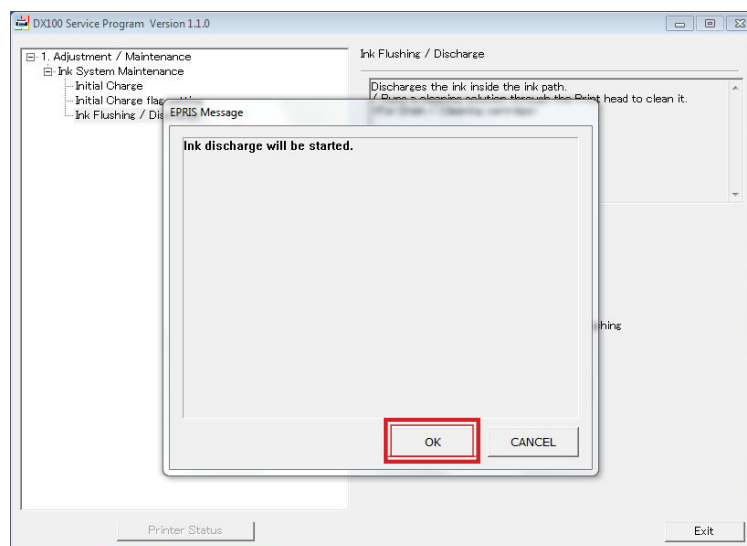


7 Remove the Ink Cartridges.

Then insert the Drain Cartridges and click OK.



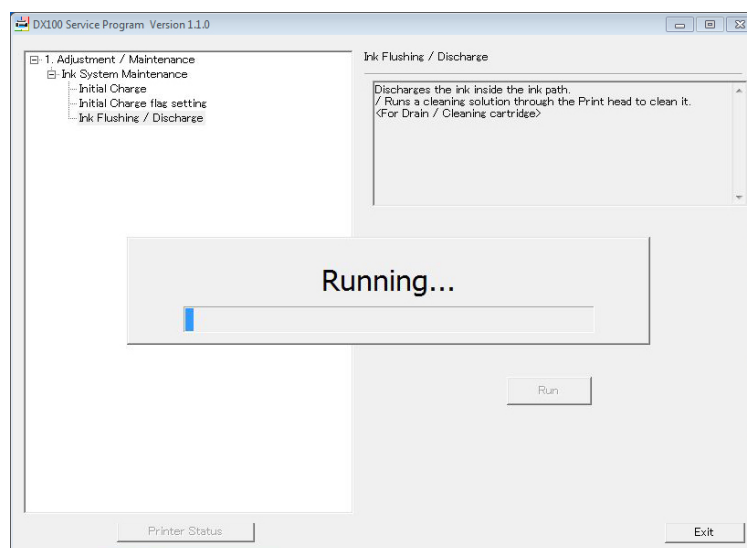
8 Click OK to initiate the process.



9 The Progress Bar appears, this will take 15 min. to complete.

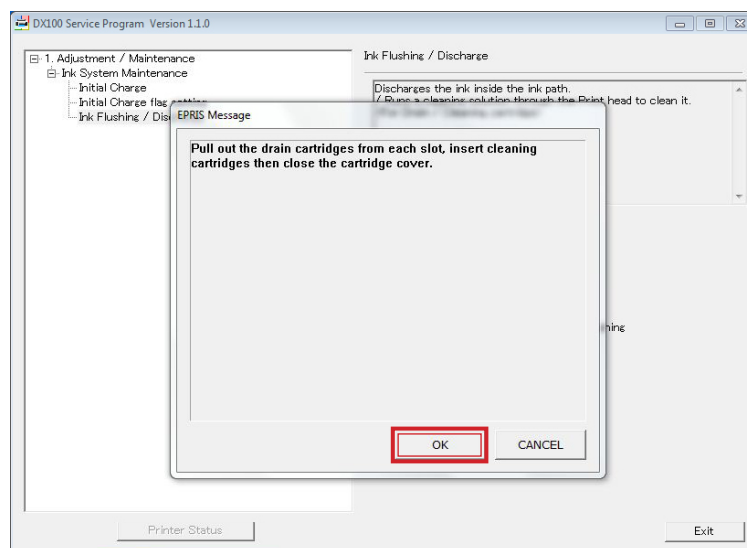
Note: The Blue LED should be blinking above the power button on the printer.

Important: Do not interrupt this process by opening any doors, unplugging the AC power or USB cable. Doing so will result in performing the process again.



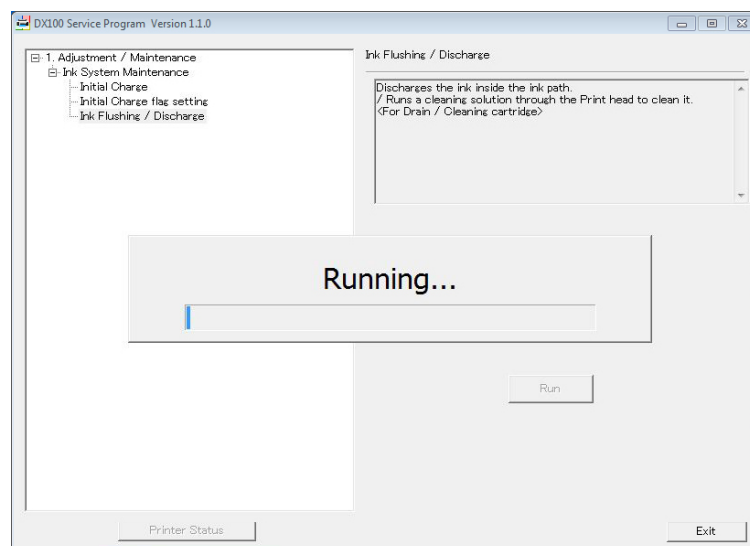
10 Remove the Drain Cartridges and insert the Cleaning Cartridges.

Then click OK.



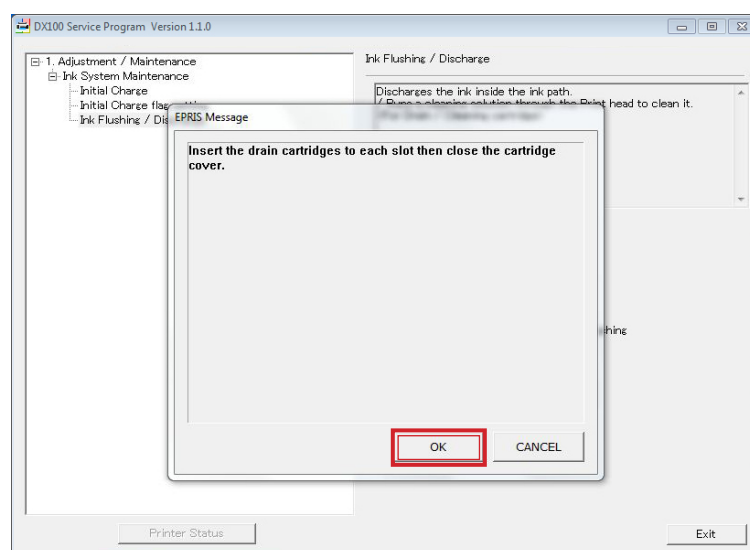
11 The Progress Bar appears, this will take 15 min. to complete.

Note: The Blue LED should be blinking above the power button on the printer.

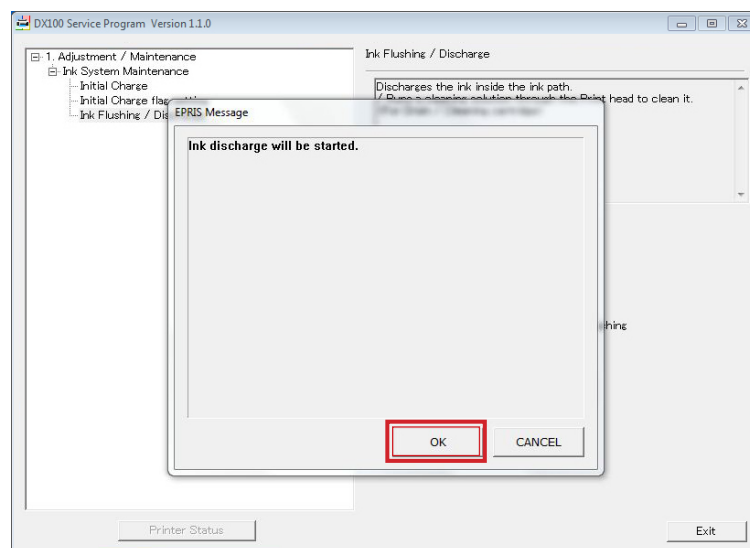


12 Remove the Cleaning Cartridges and insert the Drain Cartridges.

Then Click OK

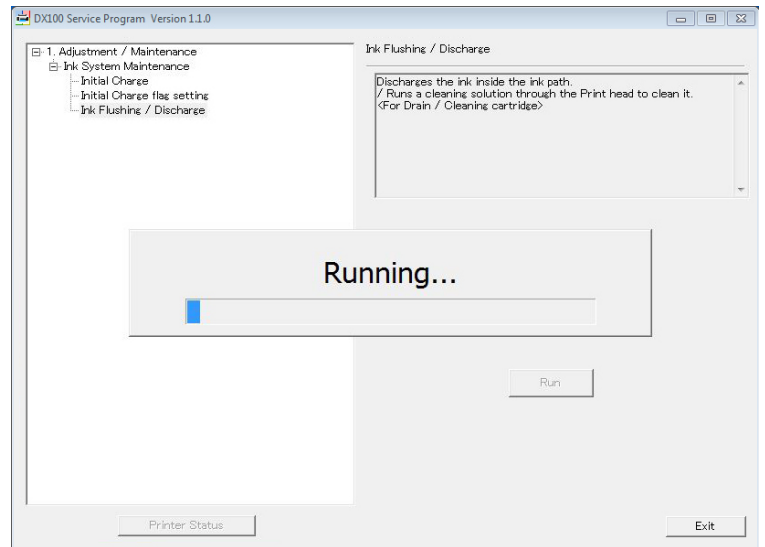


13 Click OK to the final draining cycle.



14 The Progress Bar appears, this will take 15 min. to complete.

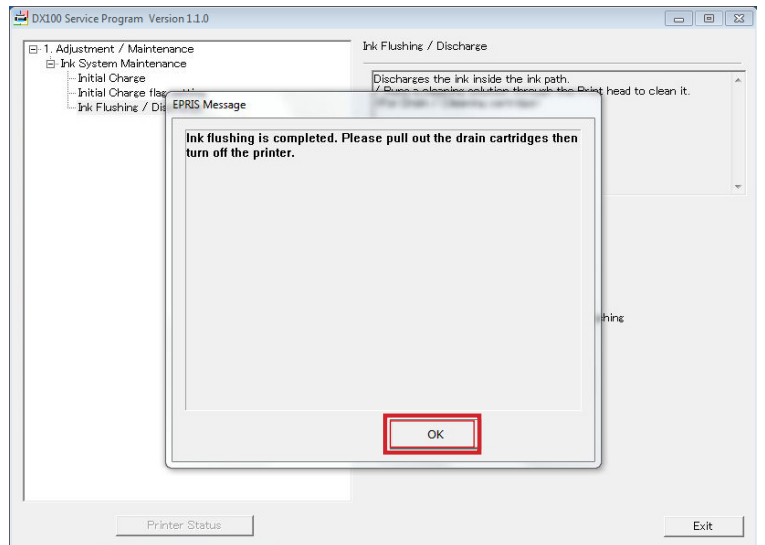
Note: The Blue LED should be blinking above the power button on the printer.



15 Once the process is complete the following message appears.

Do not turn off the printer or remove the Draining Cartridges.

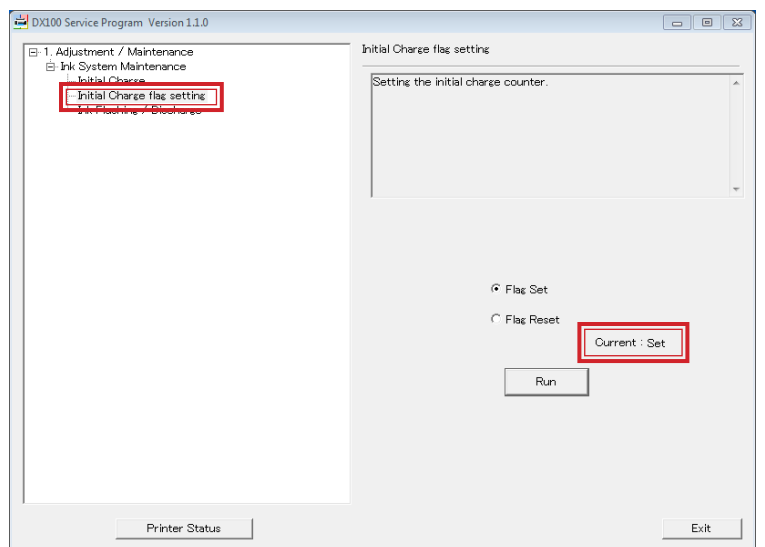
Click OK



16 Click Initial Charge Flag Settings and verify the current status is "Set". Remove the Drain Cartridges and power off the printer.

If the current status is "Not Set". Perform steps 1~15 again.

Important: Please package the printer properly when transporting, refer to the advance exchange document.



5.5.10 Ink Draining/Head Washing

This section describes Ink Draining and cleaning of the drain path.

- When removing the ink supply related parts
→ Execute the Ink Draining to prevent ink from leaking. (P. 472)
- When transporting the printer or storing it over long periods of time
→ Carry out the cleaning of the print head and the ink path with the cleaning fluid so as to prevent the ink from thickening. (P. 474)

5.5.10.1 Ink Draining

CAUTION

Make sure to observe the following precautions before starting Ink Draining.

- Do not unplug the printer AC cable during ink draining.
- Do not unplug the USB cable that connects the printer to the computer during ink draining.
- Do not open the exterior covers during Ink Draining. If the exterior cover is opened, the operation will be interrupted by an error such as Top Cover Open Error, then the operation may not be able to resume. Also, if the Ink End error occurs during operation, resume the Ink Draining as follows.
 1. Perform the Post-operation Check. (P. 408)
 2. Remove the draining cartridge that attached, and install the ink cartridge.
 3. Perform the Pre-operation Check. (P. 406)
 4. Perform the Forced Initial Ink Charge in the Recovery Utility. (P. 504)
 5. Perform the Ink Draining again.

1. Select **032. Print Head Adjustment/Maintenance** → **032. Head Adjustment** → **0325. Draining/Washing**.
2. Click [1. Start].

**CHECK
POINT**

Be sure to replace the Maintenance Tank with a new one if a message “Insufficient maintenance tank capacity left to perform initial charge. Replace maintenance tank, and then click [OK]” is displayed after clicking [1. Start]. (The free space in the Maintenance Tank must be about 15 % or more for ink draining.)

3. Take out all ink cartridges from the printer.
4. Install the Draining Cartridges into all the cartridge slots.
5. Click [2. Finish Draining] to drain ink.
6. After ink draining has completed, Pre-operation Check starts.

CAUTION

Do not reinstall the ink cartridges. Doing so and performing the Pre-Operation Check automatically starts initial ink charge.

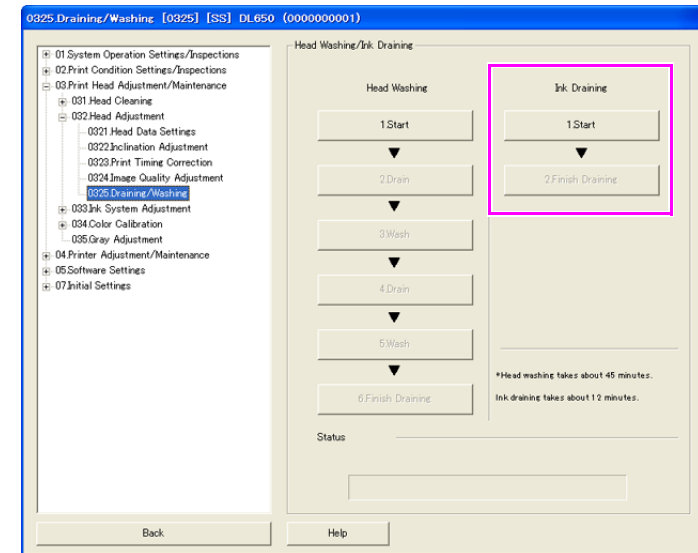


Figure 5-78. Ink Draining Screen

5.5.10.2 Head Washing

CAUTION

Make sure to observe the following precautions before starting head Cleaning.

- Make sure not to mix up the Draining Cartridges and Cleaning Cartridges.
- Do not unplug the printer power cable during head Cleaning.
- Do not unplug the USB cable that connects the printer to the computer during head Cleaning.
- You can cancel the Head Cleaning by clicking [Back], however, doing so may cause a Cleaning Cartridge end error.
- Do not open the exterior covers during Head Washing. If the exterior cover is opened, the operation will be interrupted by an error such as Top Cover Open Error, then the operation may not be able to resume. Also, if the Ink End error occurs during operation, resume the Head Washing as follows.
 1. Perform the Post-operation Check. (P. 408)
 2. Remove the draining cartridge or cleaning cartridges that attached, and install the ink cartridge.
 3. Perform the Pre-operation Check. (P. 406)
 4. Perform the Forced Initial Ink Charge in the Recovery Utility. (P. 504)
 5. Perform the Head Washing again.

CHECK
POINT

- The Cleaning Cartridge contains cleaning fluid almost enough for cleaning the head two times. After using the cartridges for the first time, make sure to put some mark or something on them so as to indicate that the cartridges have been used once.
- Cartridge error occurs if a Cleaning Cartridge already used twice is inserted to the printer.
- For carrying out the Head Washing, the free space in the Maintenance Tank must be about 60 % or more.

1. Replace the Maintenance Tank with a new one.
2. Select **03. Print Head Adjustment/Maintenance** → **032. Head Adjustment** → **0325. Draining/Washing**.
3. Click **[1. Start]**.
4. Take out all ink cartridges from the printer.
5. Install the Draining Cartridges into all the cartridge slots.
6. Click **[2. Drain]** to drain the ink.
7. Take out the Draining Cartridges and install the Cleaning Cartridges.

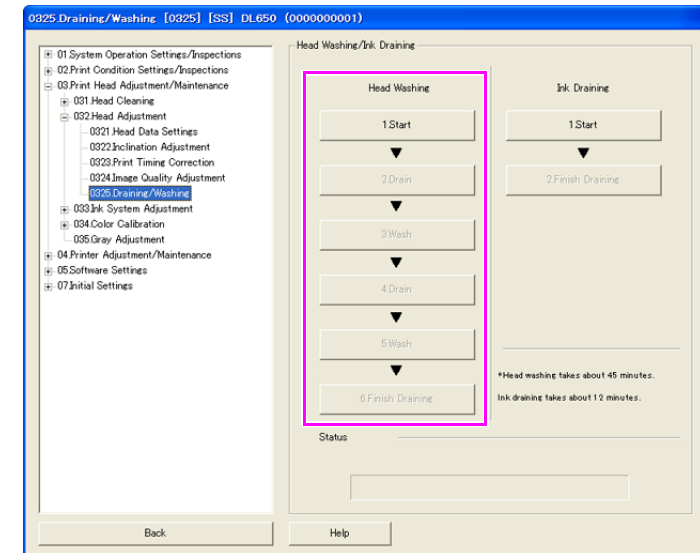


Figure 5-79. Head Washing Screen

8. Click **[3. Wash]** to wash the print head.
9. Take out the Cleaning Cartridges and install the Draining Cartridges again.
10. Click **[4. Drain]** to drain Cleaning fluid.
11. Take out the Draining Cartridges and install the Cleaning Cartridges again.
12. Click **[5. Wash]** to wash the print head.
13. Take out the Cleaning Cartridges and install the Draining Cartridges again.
14. Click **[6. Finish Draining]** to drain the Cleaning fluid.
15. After head washing has completed, Pre-operation Check starts.

CAUTION

Do not reinstall the ink cartridges. Doing so and performing the Pre-Operation Check automatically starts initial ink charge.