

SX-WSG1

Users Manual



Thank you for purchasing the Wireless Adapter SX-WSG1.

This manual provides information on how to configure and use SX-WSG1. Please read the [Safety Instructions](#) in this chapter before using SX-WSG1.

[Introduction](#)

- [About the notation](#)
- [About this manual](#)
- [About trademarks](#)

Introduction

About the notation

This manual uses the following symbols to indicate specific information for operating SX-WSG1. Be sure to carefully review before using SX-WSG1.



: This symbol indicates important information that needs to be observed when operating SX-WSG1. Make sure to read this information for safe and proper use.



: This symbol indicates information that is useful when using SX-WSG1. If you experience difficulties operating SX-WSG1, please refer to this information first.

About this manual

- Copying all or a part of this manual without our permission is prohibited.
- The contents of this manual may be changed without advance notice.
- If you have any question regarding this manual or our products, please contact our customer support.
- Please note that the actual screens may vary from the examples in this manual. This can be caused by different versions of operating systems on the PC, upgrades, etc.
- This manual has been edited very carefully. However, silex technology, Inc. is not responsible for any mistakes included in this manual or any damages, direct or indirect, arising from the use of this manual.

About trademarks

- SONY is either trademarks or registered trademarks of Sony Corporation.
- Microsoft and Windows are either trademarks or registered trademarks of Microsoft Corporation in the United States and/or other countries.
- AirMac, AirPort, Macintosh, MacOS and Safari are registered trademarks of Apple, Inc.
- Other brand or product names are trademarks or registered trademarks of their respective owners.



[Back to Top](#)

About SX-WSG1

This page provides the SX-WSG1 overview and operating environments.

[1.Features](#)

[2.Parts on SX-WSG1](#)

- [Parts and function](#)

[3.Notes on the radio wave](#)

1.Features

SX-WSG1 is a Wireless Adapter which supports IEEE802.11b/g and has the following features:

- **Wireless printing directly from a digital camera is available (Camera Direct Transfer function)**

By connecting SX-WSG1 to the Digital Photo Printer which supports camera direct transfer, the image data can directly be transferred and then printed from the digital camera to the Digital Photo Printer via FTP.

* Only one Digital Photo Printer can be connected at a time.

* To use this function, **Camera Direct Transfer** mode needs to be selected at extended function setting.

(Default Extended Function setting: Camera Direct Transfer)



For details on how to print from digital camera to Digital Photo Printer wirelessly, please visit the website below.

SONY's website: <http://www.sony.net/snablabs>

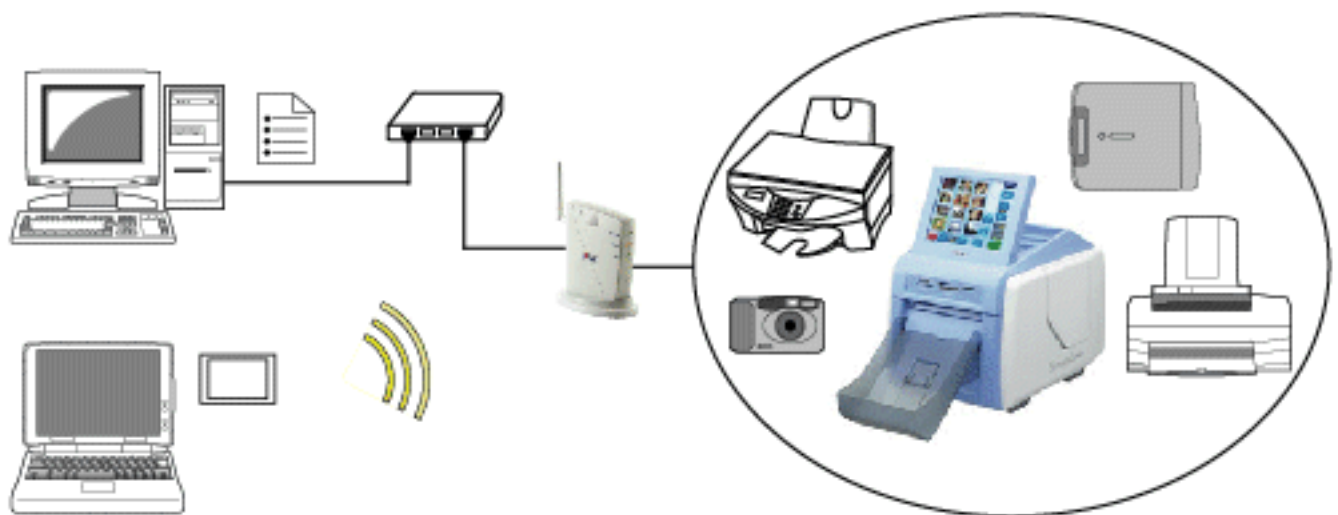
• **Share various USB devices using a PC (Device Server function)**

By using SX-WSG1 and the bundled utility, **SX Virtual Link**, you can share USB devices such as printers, scanners, storage devices among several PCs over the network (See the supported OS below). You can use USB devices as if they were locally connected to your PC.

* If a USB HUB is used, several USB devices can be connected at a time.

* To use this function, **Device Server** mode needs to be selected at extended function setting.

Supported OS	
Windows	Windows 2000 Windows XP (32-Bit Edition / 64-Bit Edition) Windows Vista (32-Bit Edition / 64-Bit Edition)
Macintosh	Mac OS X <PowerPC> Ver 10.2.7 - Ver 10.5.x
	Mac OS X <Intel> Ver 10.4.4 - Ver 10.5.x



The device server function has the following features:

- **Printer auto connection**

SX Virtual Link has a feature that detects print jobs and then automatically connects to, prints to and disconnects from the printer (or USB device with a print capability) if it is connected to SX-WSG1. You will not have to manually connect to the printer using the SX Virtual Link before you print a job.

- **Supports Raw/LPR/IPP printing**

SX-WSG1 supports **Raw mode**, **LPR** and **IPP**, three of the network printing protocols commonly used by users. When a printer is connected to SX-WSG1, you can also use standard Windows printing.

- **Digital Photo Printer status**

Since the operating status of the Digital Photo Printer is displayed on SX-WSG1's Web page, you can always check the printer status as well as ink levels from your PC.

For details on the Digital Photo Printer, please visit the below website.

SONY's website: <http://www.sony.net/snplab>

- **Support IEEE802.11b/g Wireless LAN standard**

IEEE802.11b/g compliance allows sharing of various USB devices over the wireless network.

In the wireless settings, **WEP**, **WPA(PSK)** and **WPA2(PSK)** can be selected. For encryption mode, WEP supports 64/128 bit, WPA supports TKIP/AES/AUTO, and WPA2 supports AES/AUTO.

- **Easy configuration utility**

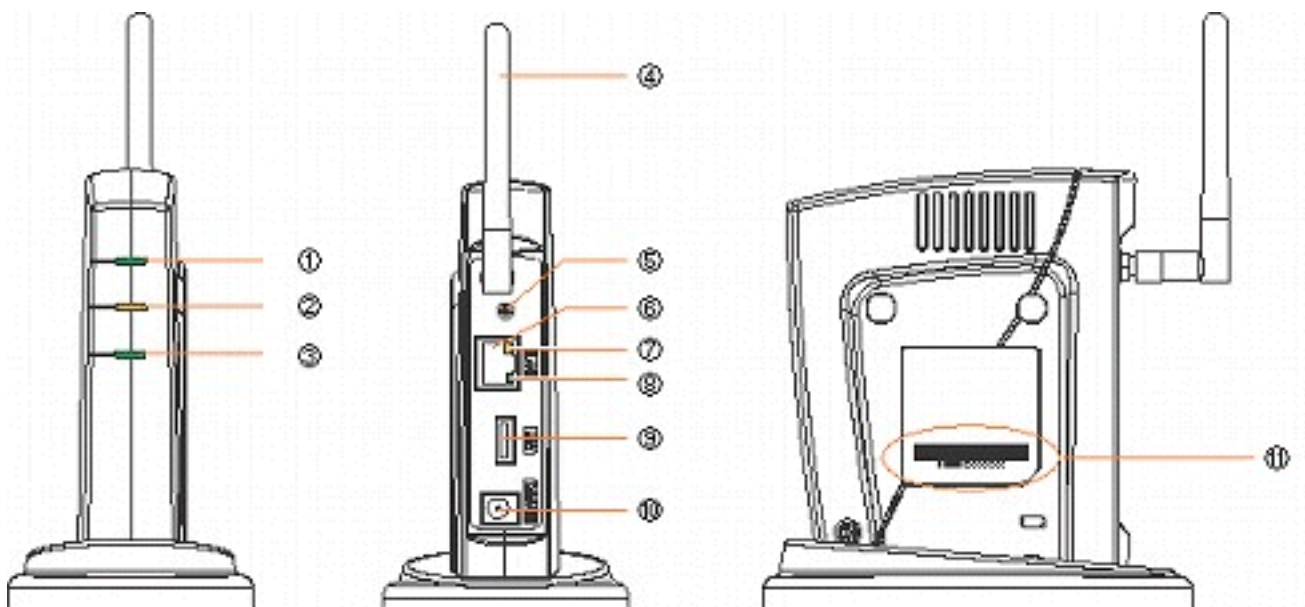
You can configure SX-WSG1 as well as install necessary utilities by answering questions on the **Wireless Adapter Setup**, which is a wizard-style utility included in the CD-ROM that came with SX-WSG1. Since SX-WSG1 has a wired LAN port (10BASE -T/100BASE-TX), an easy wireless LAN configuration based on the wired connection will be available. Also, SX-WSG1 supports the configuration method using a USB memory, which allows you to configure even if you do not have a wired LAN environment.



- Camera Direct Transfer mode and Device Server mode cannot be used at a time.
- silex technology shall not be liable for any loss or damage of data in data storage devices resulting from the use of SX-WSG1. silex technology shall not also be liable for any leak, manipulation, loss, or corruption of data in data storage devices connected to SX-WSG1 as a result of improper use.
- Isochronous devices such as Web camera and USB speaker, etc. are not available.
- Depending on the USB printers (or USB devices with a print function), the **Printer auto connection** feature may not be available.
- When standard Windows printing is used, the printer status from Status Monitor, which came with the printer or MFP, is not available.
Also, if the printer supports only a print in bi-directional communication, standard Windows printing cannot be used.
- When using standard Windows printing, up to 4 printers can be connected at a time. To connect 5 or more, use SX Virtual Link.
- In Windows Vista, the RAW mode printing is not available. Please use LPR or IPP printing.

2.Parts on SX-WSG1

Parts and function



1	Wireless LED (Green)	ON	Communicating in Infrastructure mode.
		Blink	Communicating in Ad hoc mode.
		OFF	Communicating through a wired network.

2	Status LED (Orange)	Blinks during data transfer.	
3	Link LED (Green)	<For a wired network connection >	
		ON	A network connection is established through a wired LAN.
		Blink	Searching for a network connection (Blinks when a network cable is disconnected)
		< For a wireless connection >	
		ON	A network connection is established through a wireless LAN (Infrastructure mode).
		Blink	Searching for network connection (Blinks when the wireless LAN settings on SX-WSG1, such as a WEP key or SSID, does not match the wireless network)
	OFF	Running in wireless LAN (Ad hoc mode).	
4	Wireless LAN antenna	This antenna is used for communication through a wireless LAN.	
5	Push Switch	This push switch is used to reset to the factory defaults. For details, refer to Reset to Factory Default .	
6	Network Port	Connects to the network cable.	
7	Status LED (Orange)	Blinks during data transfer through a wired network.	
8	Link LED (Green)	ON	A network connection is established through a wired LAN.
		Blink	Searching for a network connection.
		OFF	Running in a wireless LAN.
9	USB Port	Connect a USB Cable (A Type connector).	
10	Power Connector	Connect AC adapter.	
11	Ethernet Address	The Ethernet (MAC) Address of SX-WSG1 is found on the bottom. The last 6 digits are the SX-WSG1's serial number. Example) If the Ethernet Address is 00:80:92:00:11:22 (noted as 008092001122) then SX-WSG1's serial number is 001122.	

3. Notes on the radio wave

Do not use SX-WSG1 near the following equipment or places.

The following equipment may use the same band. If you use SX-WSG1 near this equipment, the radio waves from SX-WSG1 and the following devices may interfere with each other.

- Microwave, scientific instruments, pacemaker or other medical equipment.
- Licensed radio station in a factory.
- Small power radio station (a non-licensed radio station).

Do not use SX-WSG1 near a cellular phone, TV or Radio.

A cellular phone, TV, and radio use a different radio band than our products. Generally if they are used near SX-WSG1, it will not cause a problem. However, when they approximate SX-WSG1, sound or image noise can happen.

If there is reinforced concrete/metal between wireless devices, they may not connect.

SX-WSG1 can connect through wood or glass, but can have trouble communicating through reinforced concrete/metal.

Wireless Equipment for 2.4GHz band

This band of equipment is used by a microwave, industry, science, medical equipment and licensed in room or low power (non licensed) radio stations.

- Before you use this equipment, verify that it will not interfere with other broadcasting.
- If interference happens, stop using the equipment or change the band. Contact us to discuss ways of avoiding interference (example: create the wall).



2.4 : The frequency of this device is 2.4Ghtz

DS/OF : The modulation used is DS-SS and OFDM.

4 : The range of interference is (<=40m).

■ ■ ■ : Different channels can be used to avoid interference.

 [Back to Top](#)

Enable Camera Direct Transfer Feature

This page explains how to enable Camera Direct Transfer feature.

[1. Check SX-WSG1 settings](#)

[2. How to use](#)

1. Check SX-WSG1 settings

Check that the SX-WSG1 is running in the mode which allows communication with a digital camera (Camera Direct Transfer mode) by accessing SX-WSG1's Web browser configuration interface. The following is the method to access the Web browser configuration interface.



- To use the Web browser configuration interface, the TCP/IP settings need to be enabled, and an IP address needs to be configured.
- We recommend the following Web browsers:

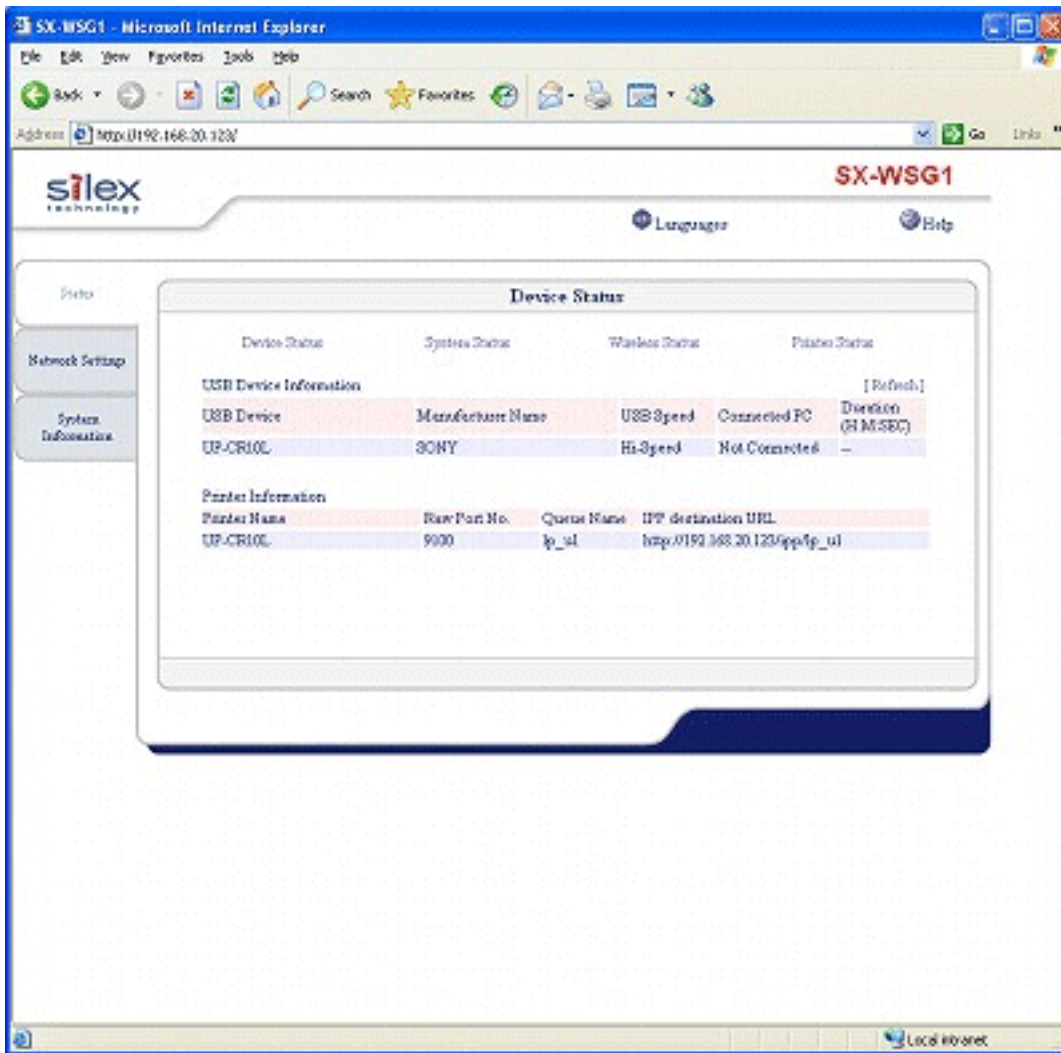
Windows	Microsoft Internet Explorer 5.5 or higher
	Netscape Navigator 7.1 or higher
Mac OS	Safari 1.0.3 or higher

- The following procedures are examples when Internet Explorer is used in Windows XP. Actual screens or displays may vary depending on your Web browser.

1. Access the SX-WSG1's Web page.

Type the IP address of the SX-WSG1 in the address bar of the Web browser and press the ENTER key.

Example) Type 192.168.20.123 and press the ENTER key.



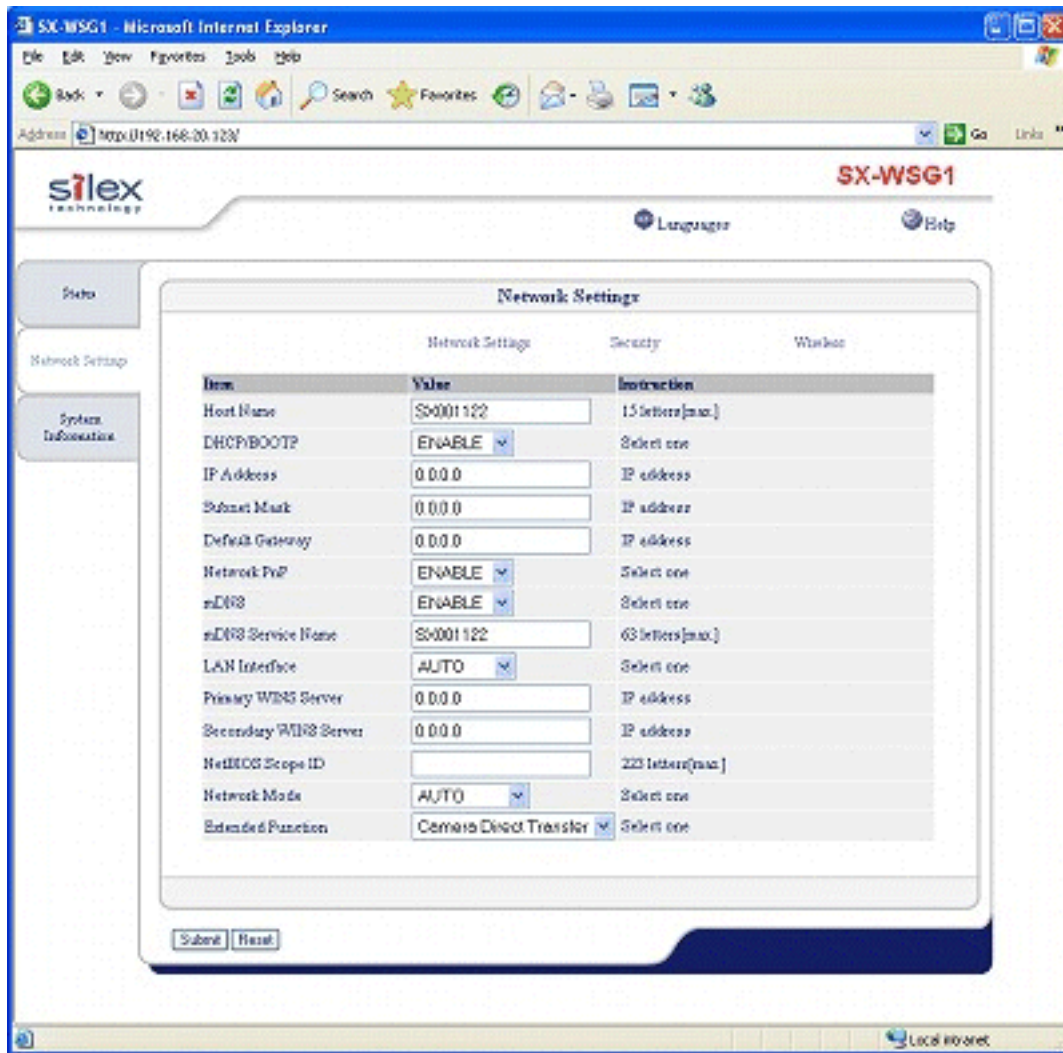
Note

- If you are not sure of the IP address, you can go back to the Wireless Adapter Search screen in Wireless Adapter Setup and find it there. For details, refer to **Configure Through a Wired LAN** ([For Windows](#) / [For Macintosh](#)).

2. Click **Network Settings** tab. The window below is displayed. Enter a user name (root) and password (by default, there is no password) and click **OK**.



3. Check that **Camera Direct Transfer** is selected at **Extended Function**.
If **Device Server** has been selected, select **Camera Direct Transfer** and click **Submit** button.
SX-WSG1 will reboot and run in Camera Direct Transfer mode.



Camera Direct Transfer feature has been enabled.

2. How to use

For details on how to print from digital camera to a Digital Photo Printer wirelessly, please visit the website below.

SONY's website: <http://www.sony.net/snaplab>



[Back to Top](#)

Enable Device Server Feature

This page explains how to enable the Device Server feature.

To use the SX-WSG1 as a device server, you need to change the configuration is as follows.



- To use the Web browser configuration interface, the TCP/IP settings need to be enabled, and an IP address needs to be configured.
- We recommend the following Web browsers:

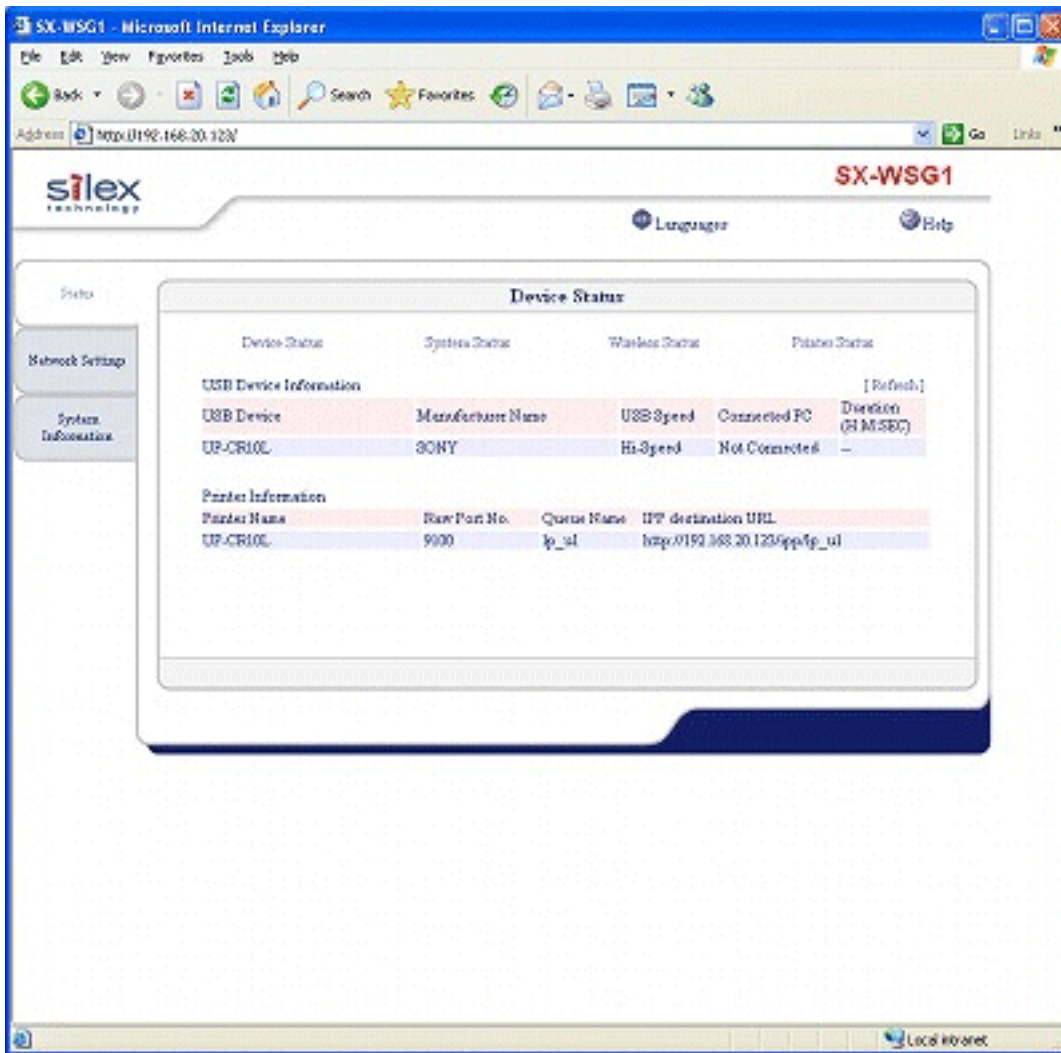
Windows	Microsoft Internet Explorer 5.5 or higher
	Netscape Navigator 7.1 or higher
Mac OS	Safari 1.0.3 or higher

- The following procedures are examples when Internet Explorer is used in Windows XP. Actual screens or displays may vary depending on your Web browser.
- If the Device Server feature is enabled, the digital camera connection capability will be lost.

1. Access the SX-WSG1's Web page.

Type the IP address of the SX-WSG1 in the address bar of the Web browser and press the ENTER key.

Example) Type 192.168.20.123 and press the ENTER key.



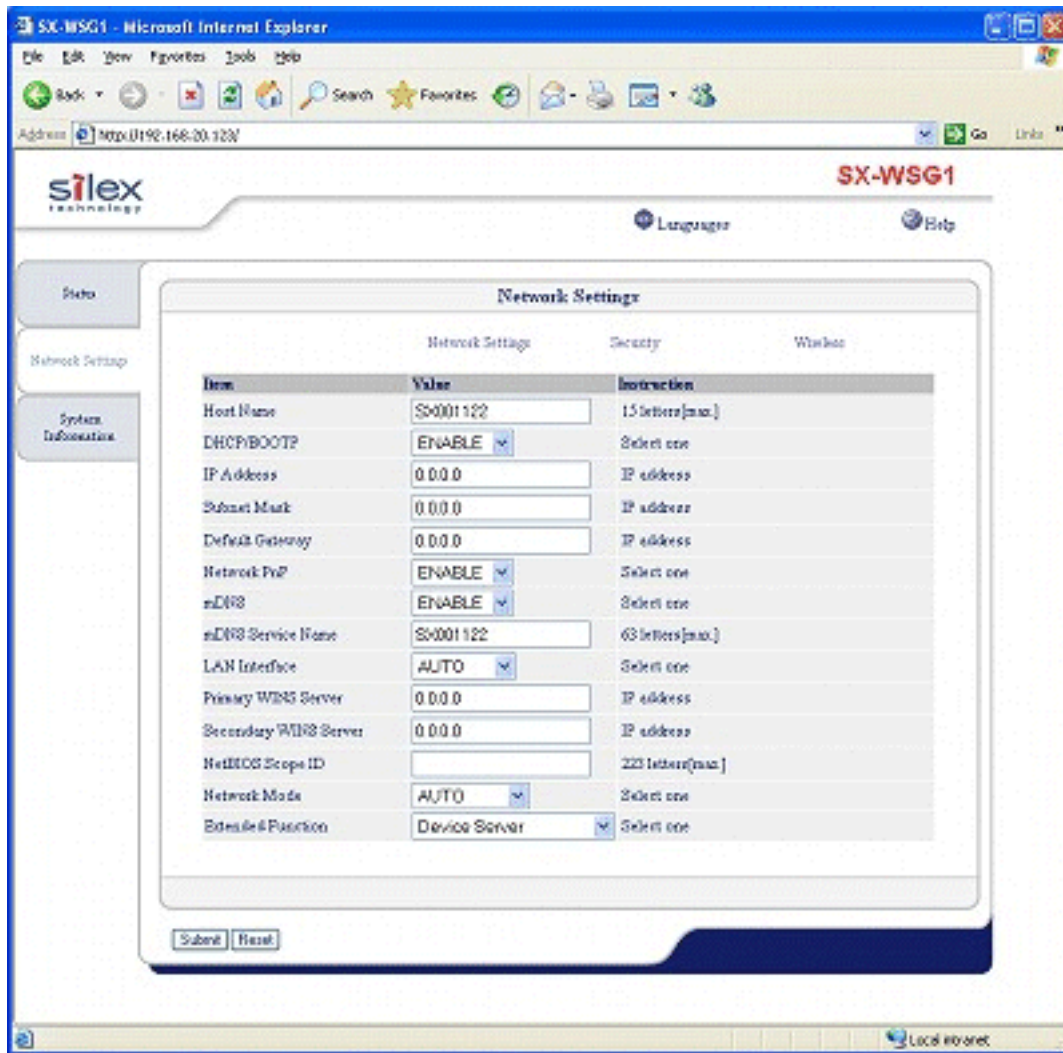
Note

- If you are not sure of the IP address, you can go back to Wireless Adapter Search screen in Wireless Adapter Setup and find it there. For details, refer to **Configure Through a Wired LAN** ([For Windows](#) / [For Macintosh](#)).

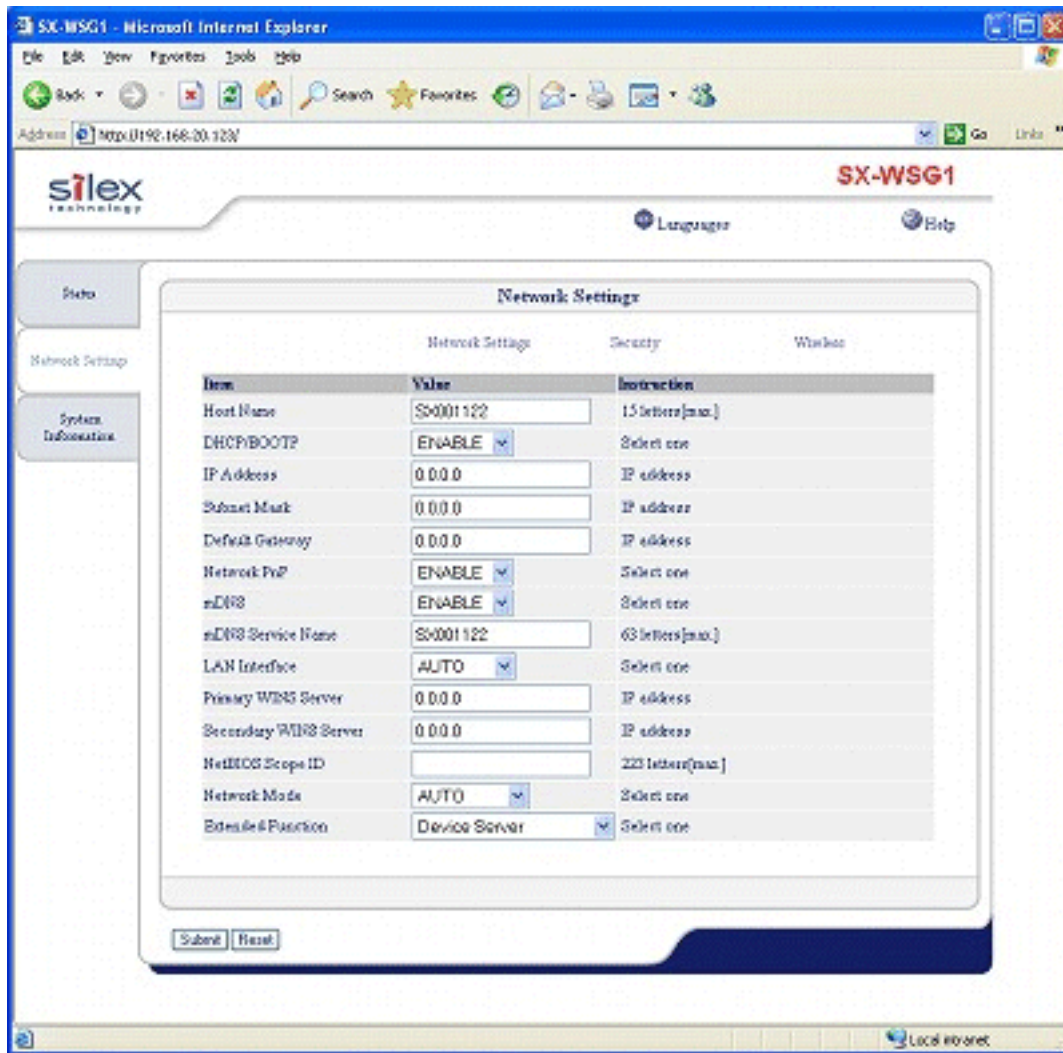
- Click **Network Settings** tab. The window below is displayed. Enter a user name (root) and password (by default, there is no password) and click **OK**.



3. Select **Device Server** at **Extended Function**.



4. Click **Submit** button.



Device Server feature has been enabled.
SX-WSG1 will reboot and run as a device server.

To use the device server feature, you need to install the USB device connection utility, SX Virtual Link.

For details on how to install SX Virtual Link, refer to **Install Application** ([For Windows](#) / [For Macintosh](#)).

If SX Virtual Link has already been installed on your PC, refer to **SX Virtual Link Overview** ([For Windows](#) / [For Macintosh](#)) for details on how to use it.

 [Back to Top](#)

Display Digital Photo Printer Status

This page explains how to display the printer status for a Digital Photo Printer on SX-WSG1's Web page.



- To use the Web browser configuration interface, the TCP/IP settings need to be enabled, and an IP address needs to be configured.
- We recommend the following Web browsers:

Windows	Microsoft Internet Explorer 5.5 or higher
	Netscape Navigator 7.1 or higher
Mac OS	Safari 1.0.3 or higher

- The following procedures are examples when Internet Explorer is used in Windows XP. Actual screens or displays may vary depending on your Web browser.
- This feature is available only when the Digital Photo Printer is connected to SX-WSG1.

[1. Display Digital Photo Printer status](#)

[2. About Digital Photo Printer status](#)

- [Available printer status](#)
- [Max number of printers that can be connected](#)

[3. About Digital Photo Printer](#)

1. Display Digital Photo Printer status

1. Access the SX-WSG1's Web page.
Type the IP address of the SX-WSG1 in the address bar of the Web browser and press the ENTER key.

Example) Type 192.168.20.123 and press the ENTER key.

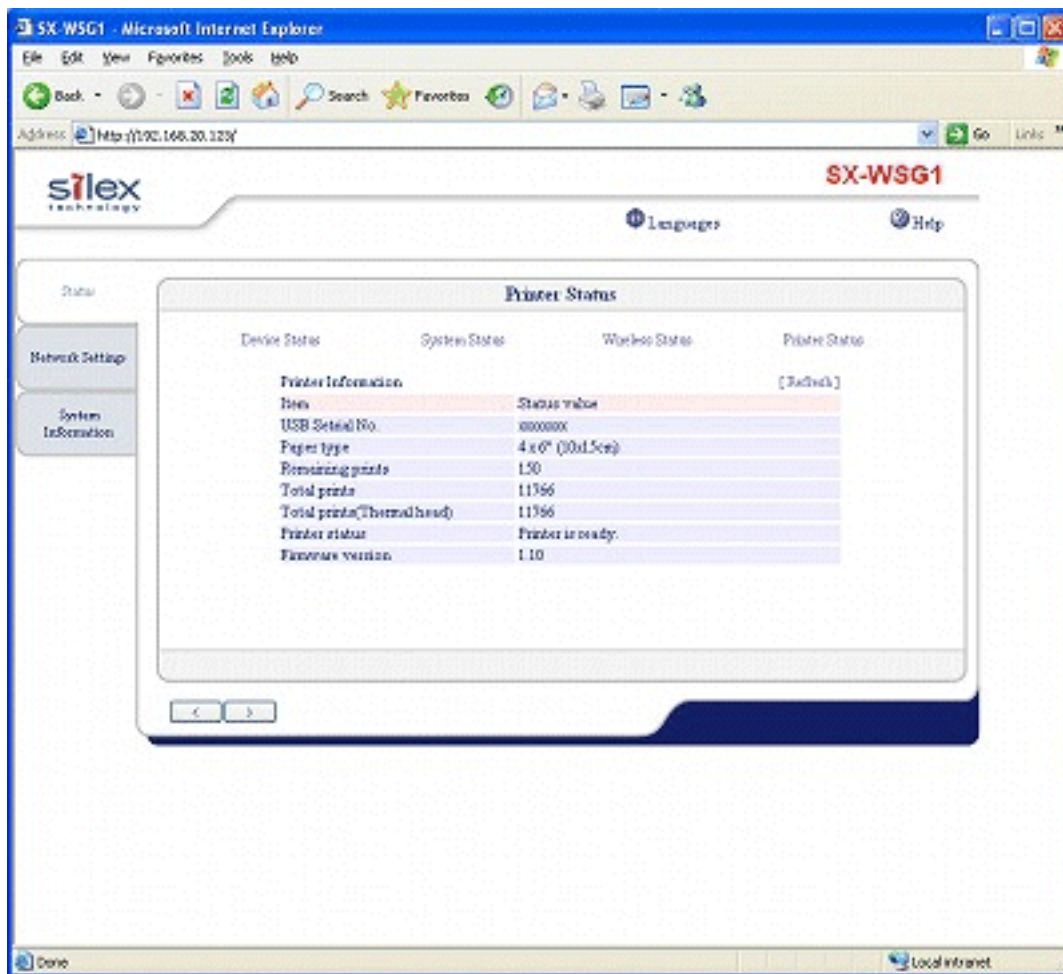
The screenshot shows the 'Device Status' page of the SX-WSG1 interface. It features a sidebar with 'Network Setup' and 'System Information' options. The main content area displays two tables:

Device Status	System Status	Wireless Status	Printer Status	
USB Device Information [Refresh]				
USB Device	Manufacture Name	USB Speed	Connected PC	Direction (H/M/SBC)
UP-CR10L	SONY	Hi-Speed	Not Connected	-
Printer Information				
Printer Name	Raw Port No.	Queue Name	IPP destination URL	
UP-CR10L	9000	ip_ul	http://192.168.20.123/app/ip_ul	

Note

- If you are not sure of the IP address, you can go back to the Wireless Adapter Search screen in Wireless Adapter Setup and find it there. For details, refer to **Configure Through a Wired LAN** ([For Windows](#) / [For Macintosh](#)).

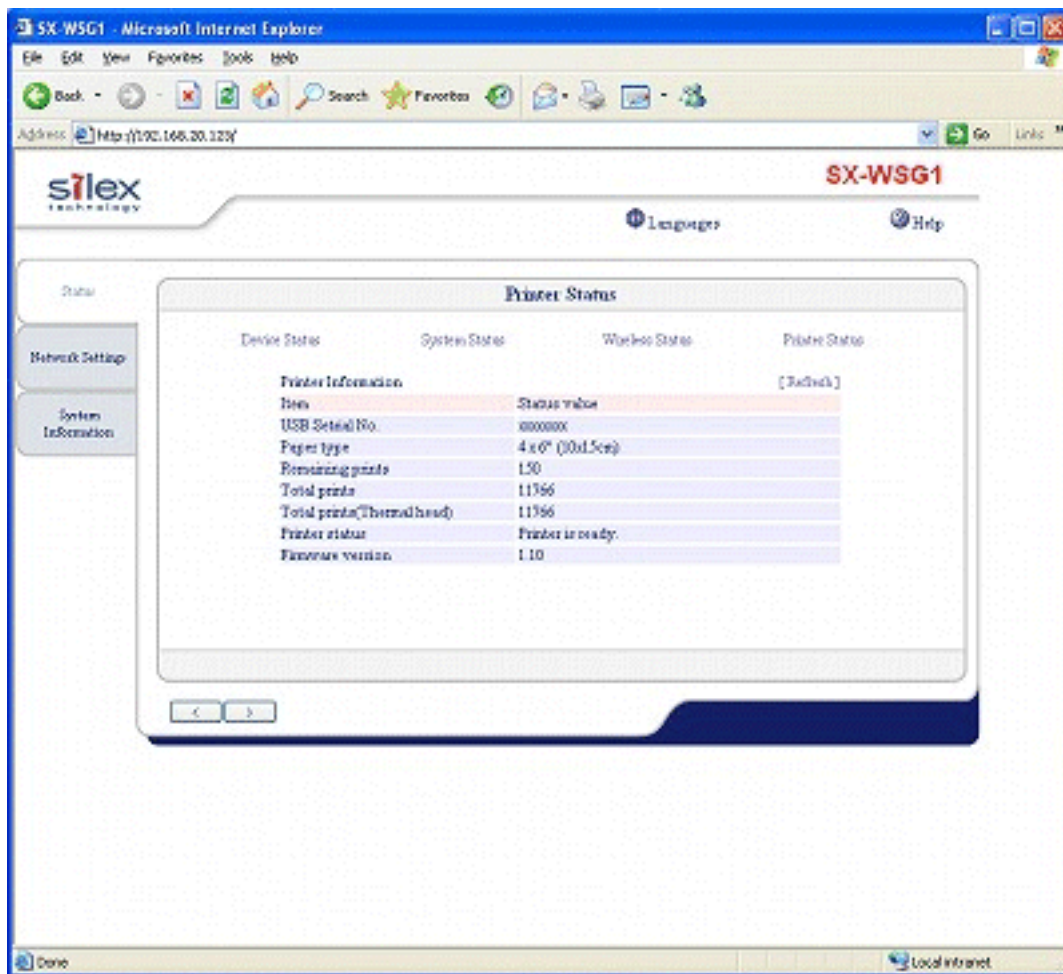
2. Click **Printer Status**.



The printer status for the Digital Photo Printer being connected to SX-WSG1 is displayed.

2. About Digital Photo Printer status

Available printer status



The printer status available on the Web page is as follows.

Name	Status
USB Serial No.	Display serial number of printer.
Paper Type	Display paper type of printer.
Remaining prints	Display ribbon level of printer.
Total prints	Display the total number of prints.
Total prints(Thermal head)	Display the total number of prints (Thermal head).
Printer status	<p>Display printer operating status. The following messages are displayed for each status.</p> <ul style="list-style-type: none"> • Printer is ready. • Printer is in use. • No print media found. • Error was detected in the printer.
Firmware Version	Display the firmware version of the printer.

Max number of printers that can be connected

The max number of printers that can be connected differs depending on the extended function setting.

Extended Function	Max number of printers that can be connected
Camera Direct Transfer	Only one printer can be connected.
Device Server	Two or more devices can be connected. (Printer status is available for each device.)

3. About Digital Photo Printer

For details on the Digital Photo Printer, please visit the website below.

SONY's website: <http://www.sony.net/snablabs>



[Back to Top](#)

Specifications

[1.Hardware specifications](#)

[2.Software specifications](#)

[3.Configuration settings](#)

- [Network Settings](#)
- [Security](#)
- [Wireless](#)
- [Password](#)

1.Hardware specifications

Operating environment	Temperature : +10°C to +35°C, +50°F to +95°F Humidity : 20% to 80%RH (Non-condensing)		
Storage environment	Temperature : -10°C to +50°C, +14°F to +122°F Humidity : 20% to 90%RH (Non-condensing)		
EMI	VCCI Class B / FCC Class B / EN55022 / EN55024		
CPU	32bit RISC CPU		
Memory	RAM : 8MByte FlashROM : 2MByte		
Wired network interface	10BASE-T/100BASE-TX 1 port. (automatic detection)		
	IEEE802.11b	Frequency	2.4GHz
		Transmission system	DS-SS
		Transmission speed	1M/2M/5.5/11M (Automatic detection)

Wireless network interface		Channel	US : 1-11ch EU : 1-13ch JP : 1-14ch
	IEEE802.11g	Frequency	2.4GHz
		Transmission system	OFDM
		Transmission speed	6M/12M/18M/36M/48M/54M (Automatic detection)
		Channel	US : 1-11ch EU : 1-13ch JP : 1-13ch
Device interface	USB2.0 Hi-Speed (A Type) : 1 port		
Others	Push Switch : 1 button		
	LED	Wired connector area	2 10BASE/100BASE Link (Green) Status (Orange)
		Front side	3 Wireless (Green) Status (Orange) Link (Green)

This equipment has been tested and found to comply with the limits for a Class B digital device, pursuant to Part 15 of the FCC Rules. These limits are designed to provide reasonable protection against harmful interference in a residential installation. This equipment generates, uses, and can radiate radio frequency energy and, if not installed and used in accordance with the instructions, it may cause harmful interference to radio communications. However, there is no guarantee that interference will not occur in a particular installation. If this equipment does cause harmful interference to radio or television reception, which can be determined by turning the equipment off and on, the user is encouraged to try to correct the interference by one or more of the following measures:

- Reorient or relocate the receiving antenna.
- Increase the separation between the equipment and receiver.
- Connect the equipment into an outlet on a circuit different from that to which the receiver is connected.
- Consult the dealer or an experienced radio/TV technician for assistance.

This device complies with Part 15 of the FCC Rules. Operation is subject to the following two conditions: (1) This device may not cause harmful interference, and (2) this device must accept any interference received, including interference that may cause undesired operation.



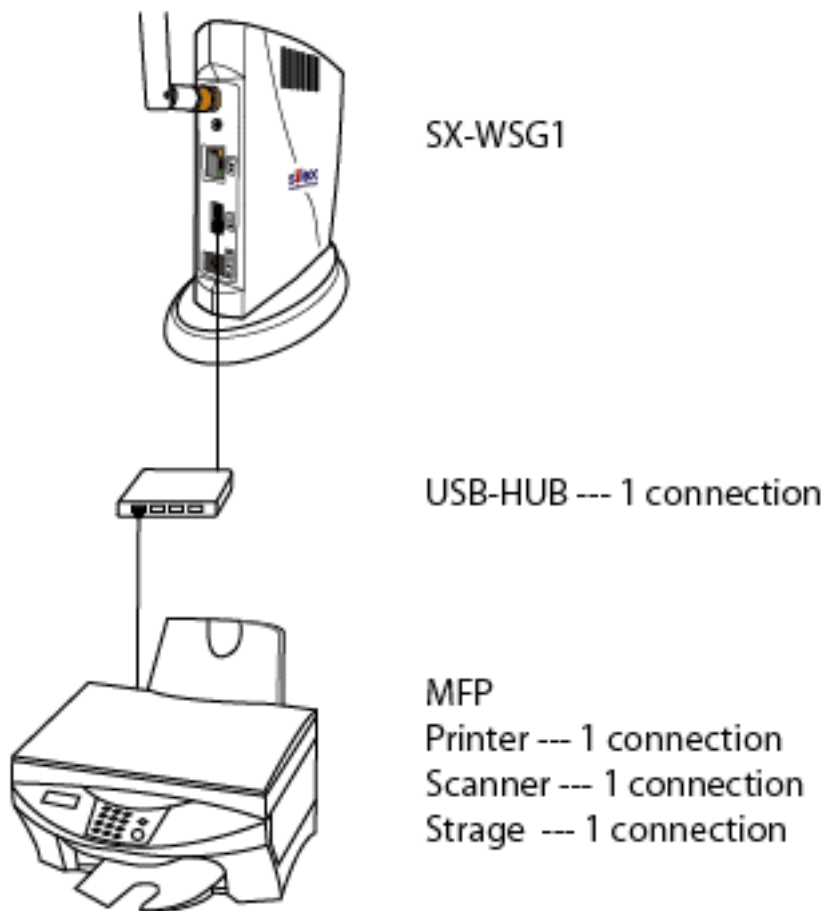
EN55022 Class-B
EN55024

2. Software specifications

Supported protocols	TCP/IP
	FTP, HTTP, TELNET, DHCP, BOOTP, WINS, TCP, UDP, ARP, IP, ICMP, JCP (silex technology, Inc. proprietary protocol), SXUPTP (silex technology, Inc. proprietary protocol), Raw, LPD, IPP
Supported OS	Windows 2000
	Windows XP (32-Bit Edition / 64-Bit Edition)
	Windows Vista (32-Bit Edition / 64-Bit Edition)
	Mac OS X <PowerPC> Ver 10.2.7~Ver 10.5.x
Mac OS X <Intel> Ver 10.4.4~Ver 10.5.x	
Total number of available USB connections	15 (including USB hub) (When using standard Windows printing, up to 4 printers can be used at the same time.)

Note

- Number of connections
SX-WSG1 recognizes the following configuration as 4 USB connections. The MFP has 3 embedded connections for the printer, scanner and storage. Therefore, 1 connection is for the USB hub and 3 connections for the MFP.



Note

- USB Hub connection
SX-WSG1 does not support a cascade connection. Do not connect two or more USB Hubs between SX-WSG1 and a USB device.

3.Configuration items

The following items can be configured using a Web browser.

Network Settings

Item	Description	Factory default

Host Name	Configure the host name for SX-WSG1. The host name is used for the SX Virtual Link, WINS, etc. Assign a unique name.	SXxxxxxx (xxxxxx is the last 6 digits of the Ethernet address)
DHCP/BOOTP	Enable DHCP/BOOTP protocol operations. SX-WSG1 detects DHCP and BOOTP automatically. If more than 1 address gets returned, the IP address which is returned first will be assigned.	ENABLE
IP Address	Configure the IP address on SX-WSG1 in decimal number, "XXX.XXX.XXX.XXX."	0.0.0.0
Subnet Mask	Configure the subnet mask on SX-WSG1 in decimal number, "XXX.XXX.XXX.XXX." If the value is "0.0.0.0," the subnet mask corresponding to the IP address will be assigned automatically.	0.0.0.0
Default Gateway	Configure the default gateway on SX-WSG1 in decimal number, "XXX.XXX.XXX.XXX." "0.0.0.0" will be disabled.	0.0.0.0
Network PnP	Enable/Disable Network PnP function.	ENABLE
mDNS	Enable/Disable mDNS function (Apple's Bonjour)	ENABLE
mDNS Service Name	Configure mDNS service name of SX-WSG1. This name will be displayed when SX-WSG1 is searched using Apple's Bonjour. Assign a unique name.	SXxxxxxx (xxxxxx is the last 6 digits of the Ethernet address)
LAN Interface	Configure the physical network type. "AUTO" is recommended. If the LED on the hub is not turned on when you turn on SX-WSG1, change the network type to the network type of the HUB.	AUTO
Primary WINS Server Secondary WINS Server	Configure the IP address on the WINS server (primary/secondary) in decimal number, "xxx.xxx.xxx.xxx."	0.0.0.0
NetBIOS Scope ID	Configure the group ID for WINS environment. The scope ID defines the computer group ID that detects the registered host name.	Blank
Network Mode	Configure the network connection by selecting "AUTO", "WIRED" or "WIRELESS". When you select "AUTO", SX-WSG1 automatically detects the connection type such as a wired connection for a LAN cable connection or a wireless connection for a non-wired connection.	AUTO

Extended Function	<p>Configure the SX-WSG1 operating mode. Camera Direct Transfer mode and Device Server mode can be selected.</p> <p>If Camera Direct Transfer is enabled, a print data can be transferred directly from digital camera to Digital Photo Printer and then printed without PC. If Device Server is enabled, various USB devices can be shared among several PCs over the network.</p>	Camera Direct transfer
-------------------	---	------------------------

Security

Item	Description	Factory default
IP Filter Mode	<p>Configure the IP filter operations. Available options are "ALLOW" and "DENY." If you select "ALLOW," only the data from the configured IP address range are accepted. If you select "DENY," the data from the configured IP address range cannot be received.</p>	DENY
Filter #0-3	<p>Configure the IP filter range. IP addresses to be filtered can be configured to maximum 4 address ranges. If address range configuration is not required, please enter the address range from "0.0.0.0" to "0.0.0.0".</p>	0.0.0.0

Wireless

Item	Description	Factory default
Wireless Mode	<p>Configure the wireless mode on SX-WSG1. Select either AdHoc or Infra.</p> <p>If you do not use an access point: AdHoc also called 802.11 Ad hoc, needs SSID configuration. A network with enhanced security can be established because the access is allowed only within the group sharing the SSID.</p> <p>If you use an access point: Select Infrastructure mode. This mode connects and communicates through the access point which has the same SSID as SX-WSG1.</p>	AdHoc

SSID	<p>Configure the SSID on SX-WSG1. Maximum 32 alphanumeric characters can be used for the configuration.</p> <p>SSID is an ID that logically distinguishes one wireless LAN network from another.</p> <p>Whenever SSID does not match, groups cannot communicate with each other even if those groups use the same channel in the same communication area.</p>	GROUP
Channel	<p>Configure the communication channel that is used for Ad hoc mode.</p> <p>The devices should use the same channel if they need to communicate with each other.</p> <p>If the same SSID already exists, the channel setting originally configured through it is invalidated.</p>	11
Network Authentication	<p>Select the Network Authentication mode from Open, Shared, WPA and WPA2.</p> <p>Open (Open System): Permit any access without any authorization.</p> <p>Shared (Pre-Shared Key): Grant the access to the device sharing a secret WEP key that is configured beforehand.</p> <p>WPA ("Infrastructure" mode only): Provide network authorization through PSK and encrypted data transmission through TKIP/AES/AUTO. Since the encryption key is created by communicating with an access point, the WEP key setting is invalidated.</p> <p>WPA2 ("Infrastructure" mode only): Provide network authorization through PSK and encrypted data transmission through AES/AUTO. Since the encryption key is created by communicating with an access point, the WEP key setting is invalidated.</p>	Open
WEP	Turn ON or turn OFF WEP on SX-WSG1.	OFF
Key Index	Specify the default WEP key.	1
Key Size	Specify the length of the WEP key.	64bit
Key Format	Select the key format for WEP Key.	Hexadecimal

WEP Key1 - 4	Configure the WEP Key on SX-WSG1. Enter 10 digits (40 bit) when the key size is 64 bit. Enter 26 hexadecimal digits (104 bit) when the key size is 128 bit. If the Key Format is alphanumeric Character , enter 50digit or 13 digit alphanumeric character.	000000000000 000000000000
Encryption Mode	Select the encryption mode used for data transmission through WPA/WPA2 from TKIP , AES or AUTO . If you use WPA2 , select AES or AUTO .	AUTO
Pre-Shared Key	Enter the Pre-Shared Key. The Pre-Shared Key has to be a string with 8-63 characters.	silex technology

Password

Item	Description	Factory default
Password	Configure the password within 7 ASCII characters. This is used as the authentication password for configuration changes via the Web page.	Blank



[Back to Top](#)

CE

SX-WSG1 Manual

Introduction

- Introduction
- Safety Instructions
- About SX-WSG1
- User Registration/Services
- About OpenSSL License

Configure SX-WSG1

Camera Direct Transfer

Device Server

Printer Status

Other Functions

Troubleshooting

Specification



SX-WSG1 Manual

Introduction

Configure SX-WSG1

Before Setup

Configure SX-WSG1 (for Windows)

- Configure Through a Wired LAN
- Configure Using a USB Memory
- Configure Through a Wireless LAN
- Configure Using Windows Connect Now

Configure SX-WSG1 (for Macintosh)

- Configure Through a Wired LAN
- Configure Using a USB Memory
- Configure Through a Wireless LAN

Camera Direct Transfer

Device Server

Printer Status

Other Functions

Troubleshooting

Specification

SX-WSG1 Manual

Introduction

Configure SX-WSG1

Camera Direct Transfer

· **Enable Camera Direct Transfer Feature**

Device Server

Printer Status

Other Functions

Troubleshooting

Specification



SX-WSG1 Manual

Introduction

Configure SX-WSG1

Camera Direct Transfer

Device Server

- Enable Device Server Feature

Install Application

- For Windows
- For Macintosh

How to Use SX Virtual Link (for Windows)

- SX Virtual Link Overview
- SX Virtual Link Screen Descriptions
- Basic Usage
- Add to Favorites List
- Favorite Device Configuration
- Compact Mode
- SX Virtual Link Environment Settings

How to Use SX Virtual Link (for Macintosh)

- SX Virtual Link Overview
- SX Virtual Link Screen Descriptions
- Basic Usage
- Add to Favorites List
- Favorite Device Configuration
- SX Virtual Link Environment Settings

Uninstall Application

- For Windows
- For Macintosh

Printer Status

[Other Functions](#)

[Troubleshooting](#)

[Specification](#)



SX-WSG1 Manual

Introduction

Configure SX-WSG1

Camera Direct Transfer

Device Server

Printer Status

Other Functions

Troubleshooting

Q&A

Specification



SX-WSG1 Manual

Introduction

Configure SX-WSG1

Camera Direct Transfer

Device Server

Printer Status

Other Functions

- Print with Standard Windows Printing
- Advanced Settings Using Web Browser
- Network Plug and Play
- IP Filter
- Reset to Factory Default

Troubleshooting

Specification



SX-WSG1 Manual

Introduction

Configure SX-WSG1

Camera Direct Transfer

Device Server

Printer Status

Other Functions

Troubleshooting

Specification

Specifications



SX-WSG1 Manual

Introduction

Configure SX-WSG1

Camera Direct Transfer

Device Server

Printer Status

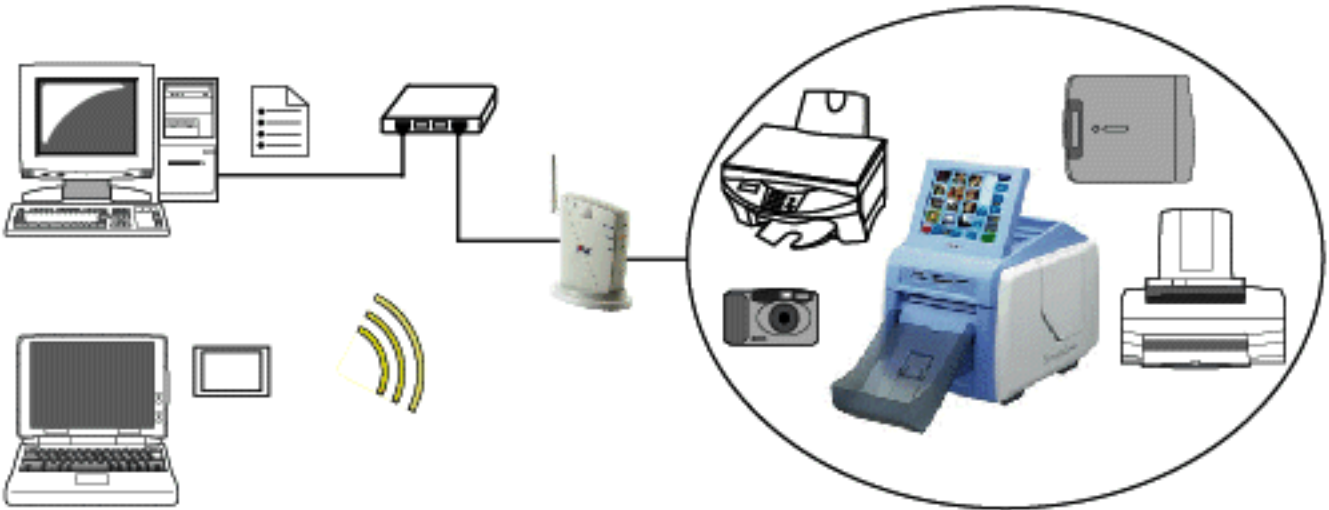
Display Digital Photo Printer Status

Other Functions

Troubleshooting

Specification









SX-WSG1



USB-HUB --- 1 connection

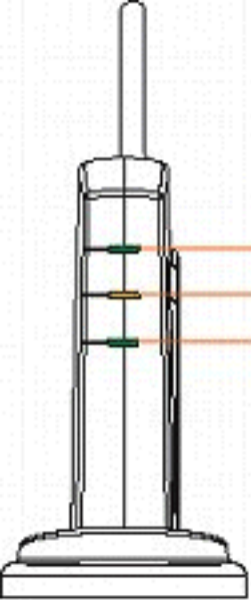


MFP

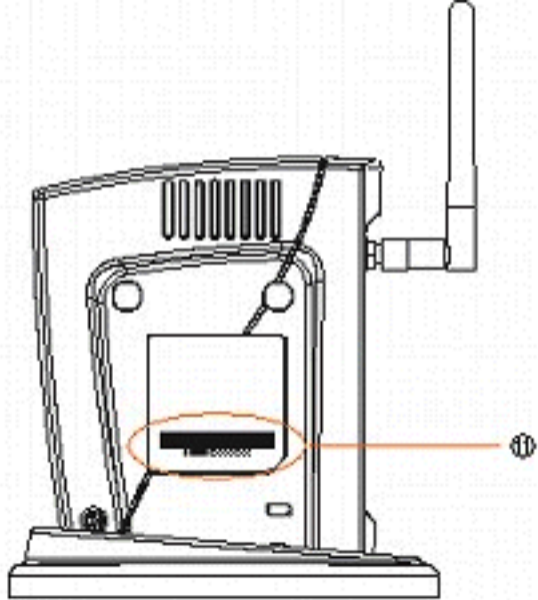
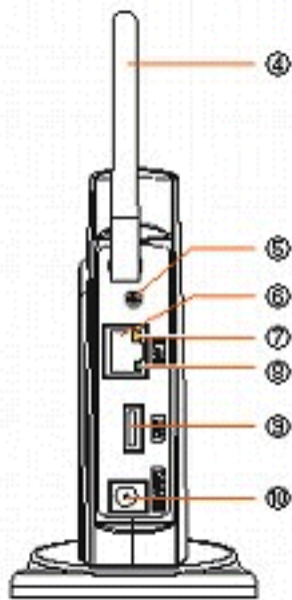
Printer --- 1 connection

Scanner --- 1 connection

Strage --- 1 connection



①
②
③





silex
TECHNOLOGY

Wireless

Status

Link

SX-WSG1 Manual**Introduction**

- Introduction
- Safety Instructions
- About SX-WSG1
- User Registration/Services
- About OpenSSL License

Configure SX-WSG1**Camera Direct Transfer****Device Server****Printer Status****Other Functions****Troubleshooting****Specification**

SX-WSG1 Users Manual



Thank you for purchasing the Wireless Adapter SX-WSG1.

This manual provides information on how to configure and use SX-WSG1. Please read the [Safety Instructions](#) in this chapter before using SX-WSG1.

[Introduction](#)

- [About the notation](#)
 - [About this manual](#)
 - [About trademarks](#)
-

Introduction

About the notation

This manual uses the following symbols to indicate specific information for operating SX-WSG1. Be sure to carefully review before using SX-WSG1.



: This symbol indicates important information that needs to be observed when operating SX-WSG1. Make sure to read this information for safe and proper use.



: This symbol indicates information that is useful when using SX-WSG1. If you experience difficulties operating SX-WSG1, please refer to this information first.

About this manual

- Copying all or a part of this manual without our permission is prohibited.
- The contents of this manual may be changed without advance notice.
- If you have any question regarding this manual or our products, please contact our customer support.
- Please note that the actual screens may vary from the examples in this manual. This can be caused by different versions of operating systems on the PC, upgrades, etc.
- This manual has been edited very carefully. However, silex technology, Inc. is not responsible for any mistakes included in this manual or any damages, direct or indirect, arising from the use of this manual.

About trademarks

- SONY is either trademarks or registered trademarks of Sony Corporation.
- Microsoft and Windows are either trademarks or registered trademarks of Microsoft Corporation in

the United States and/or other countries.

- AirMac, AirPort, Macintosh, MacOS and Safari are registered trademarks of Apple, Inc.
- Other brand or product names are trademarks or registered trademarks of their respective owners.



[Back to Top](#)

2.4



DS:OF



4



