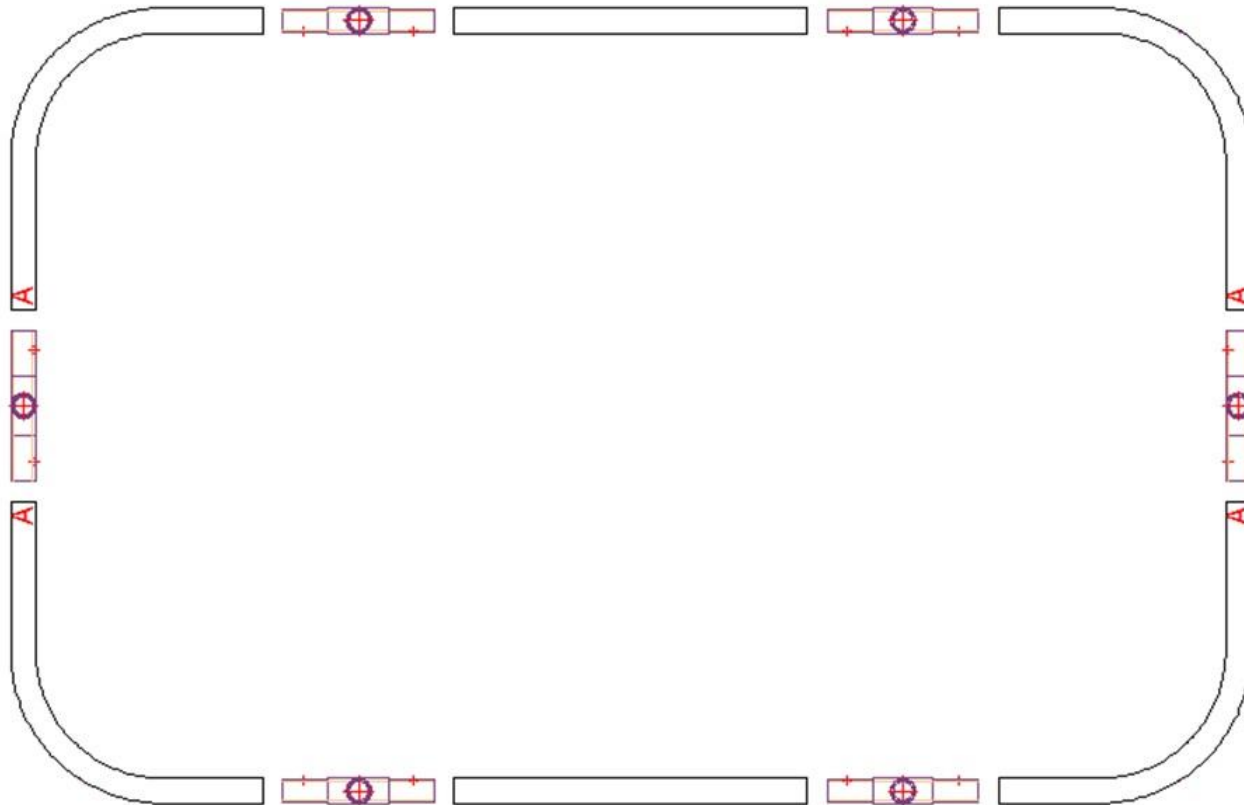




The Assembly Manual for the Portable Photobooth

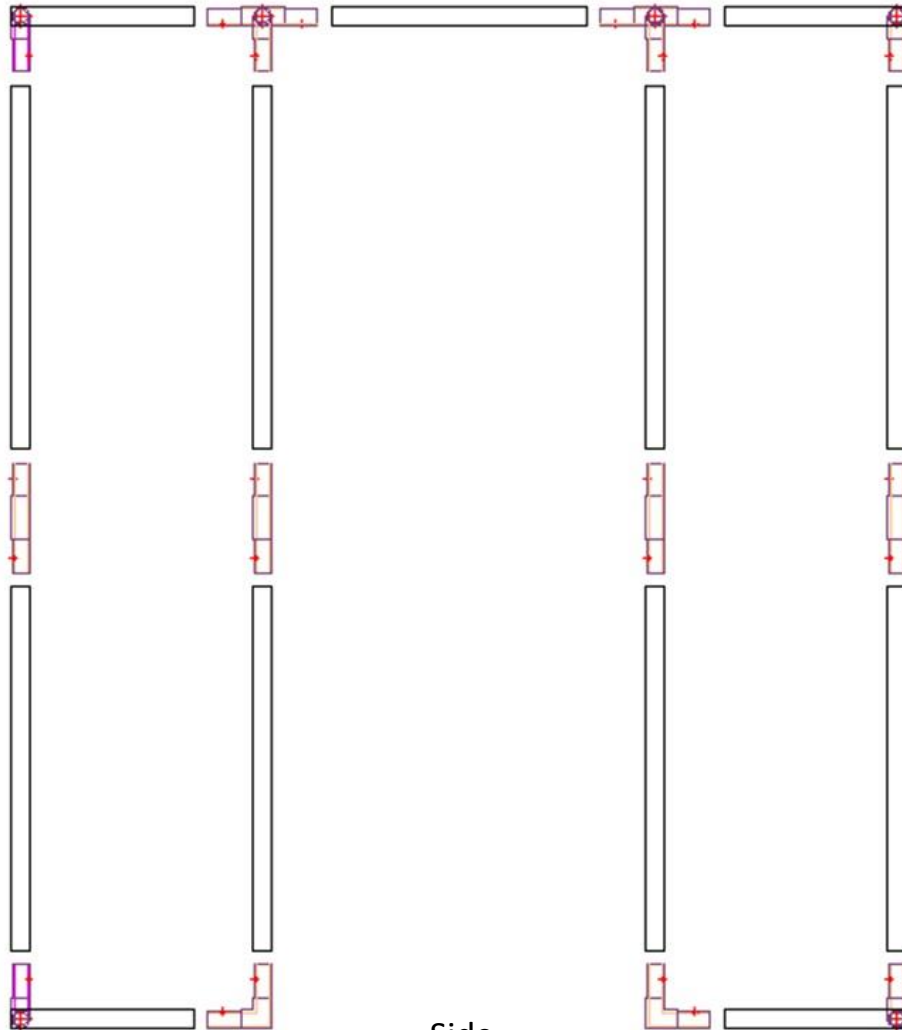
By Summit Imaging Solutions

Assembling Drawing



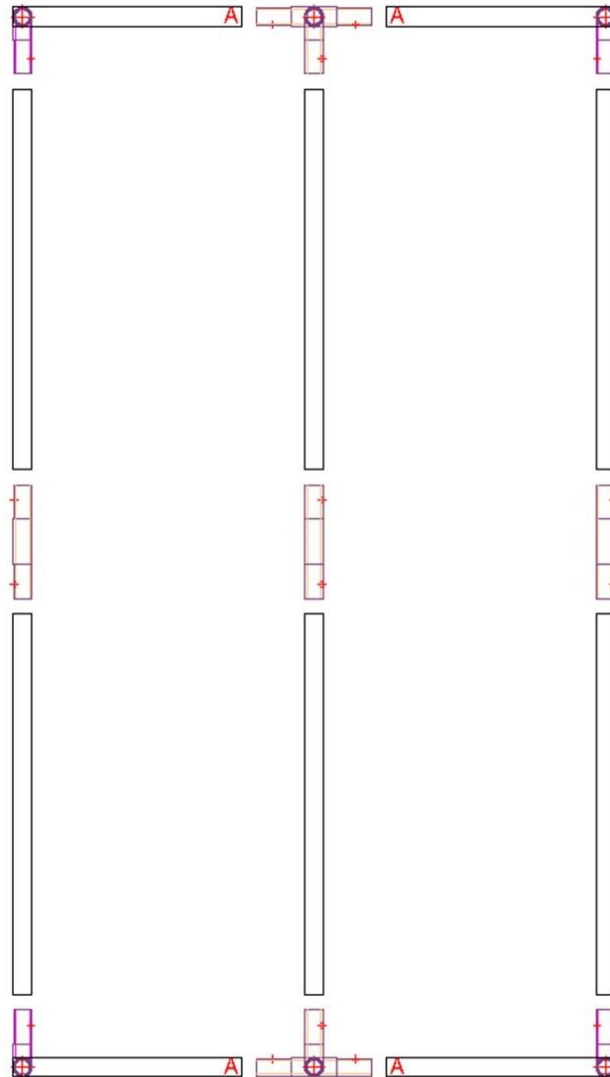
Top

Assembling Drawing



Side

Assembling Drawing



Side 2

Frame Materials Composition



"I" shape



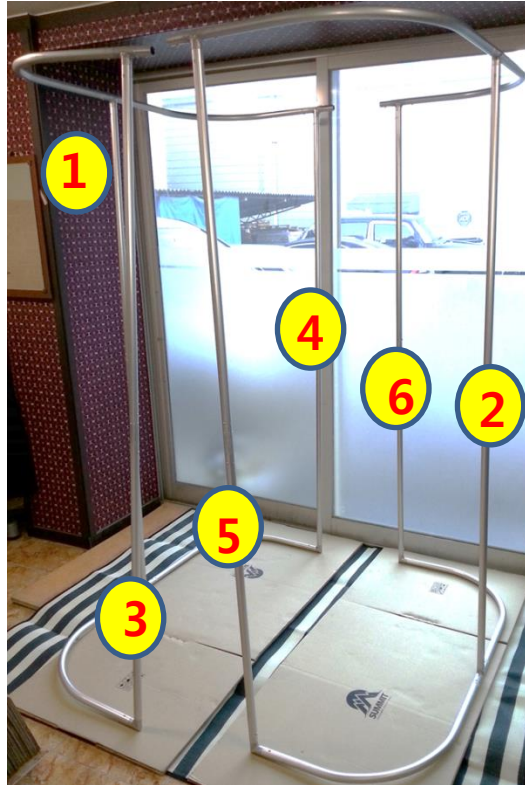
"T" shape



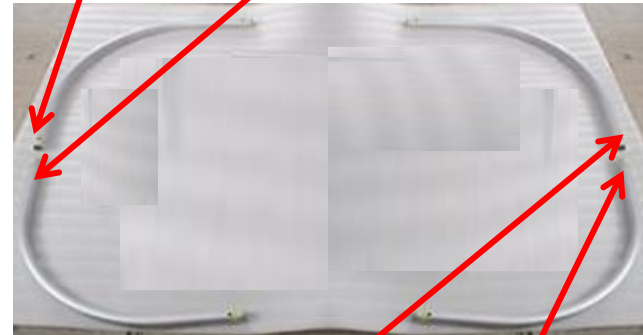
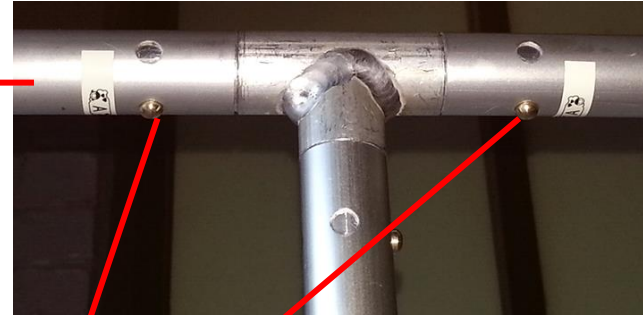
"L" shape



Two sets of iron pipes



Assemble the all pipes as shown above the picture.
Follow the letters in alphabetical order to assemble the booth (Pipe length 900).



Insert "T" shaped iron pipe in the middle of round shape.



You can see the holes of fabric like as shown in the picture.
Insert the four holes (A,B,C,D) into the supporting frame



Run up the zipper not to get stuck carefully.

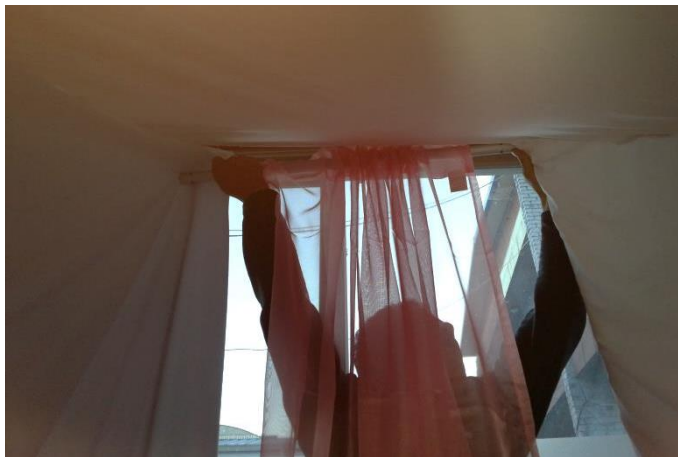
It's easier to do this with two people.

One person holds both side fabrics together, and the other person runs up the zipper.

If you want this back drop, you can use it just one side.



Insert the curtain pipe onto Pipe (700mm)
and connect Pipe A to Pipe C



We will draw two side of the curtains.
One of curtain insert to pipe.



Decorate your beautiful booth with flower tongs.
Fully constructed Photobooth



How to store your Photobooth in the bag.
All of the pipes are inside one bag.
You may also use this bag to store the curtains.

